



2014 Santa Cruz County Regional Transportation Improvement Program



Prepared by the
Santa Cruz County Regional Transportation Commission



December 2013

(As amended through May 2014)

Submitted to:

California Transportation Commission for the
2014 State Transportation Improvement Program
and Association of Monterey Bay Area Governments for the
Metropolitan Transportation Improvement Program

Developed in cooperation with: *U.S. Department of Transportation, Federal Highway Administration, Federal Transit Administration, California Department of Transportation, Association of Monterey Bay Area Governments, Project Sponsors*

**SANTA CRUZ COUNTY REGIONAL TRANSPORTATION COMMISSION
AND
SERVICE AUTHORITY FOR FREEWAY EMERGENCIES
December 2013**

<u>COMMISSIONER</u>	<u>REPRESENTING</u>	<u>ALTERNATE</u>
Dennis Norton	City of Capitola	Michael Termini
Don Lane	City of Santa Cruz	David Terrazas
Randy Johnson	City of Scotts Valley	Donna Lind
Eduardo Montesino – Chair	City of Watsonville	Daniel Dodge
John Leopold	County of Santa Cruz - 1 st District	Dave Reid
Zach Friend – Vice Chair	County of Santa Cruz - 2 nd District	Patrick Mulhearn
Neal Coonerty	County of Santa Cruz - 3 rd District	Andy Schiffrin
Greg Caput	County of Santa Cruz - 4 th District	Tony Gregorio
Bruce McPherson	County of Santa Cruz - 5 th District	Virginia Johnson
Dene Bustichi	Santa Cruz Metropolitan Transit District (SC METRO)	Daniel Dodge (Metro Chair) - Alternate #1
Ron Graves	SC METRO	Hilary Bryant - Alternate #2
Lynn Robinson	SC METRO	Margarita Alejo - Alternate #3

Ex-Officio

Tim Gubbins	Caltrans District 5	Aileen Loe
-------------	---------------------	------------

RTIP Staff

George Dondero	Executive Director
Luis Mendez	Deputy Director
Rachel Moriconi	RTIP Program Manager, Sr. Transportation Planner

Santa Cruz County Regional Transportation Commission (SCCRTC)
1523 Pacific Ave, Santa Cruz, CA 95060
Phone: 831-460-3200; Fax: 831-460-3215
Email: info@sccrtc.org/
www.sccrtc.org
RTIP: <http://sccrtc.org/funding-planning/approved-projects/>

**2014 SANTA CRUZ COUNTY
REGIONAL TRANSPORTATION IMPROVEMENT PROGRAM (RTIP)**

TABLE OF CONTENTS

1. INTRODUCTION	1
2014 Regional Transportation Improvement Program (RTIP) for Santa Cruz County	1
Contents of the RTIP	1
RTIP and STIP Development Process.....	2
STIP Revenues	2
Figure 1: State Transportation Improvement Program (STIP) Adoption Process	3
2. PROPOSAL FOR STIP FUNDS.....	4
Projected STIP Funds for Santa Cruz County.....	4
2014 RTIP Proposal for New STIP.....	4
Figure 2: Proposal for 2014 STIP Target.....	4
Amendments to Existing STIP Projects.....	5
Figure 3: Amendments to Existing STIP Projects.....	5
2014 RTIP Development.....	5
Measuring Performance and Cost-Effectiveness	6
Consultation with Caltrans	7
Transportation Funds Insufficient to Meet the Region’s Needs.....	8
3. OTHER 2014 RTIP FEATURES	9
Programming Other Federal and State Funds	9
Figure 4: Funds RTC Programmed by Mode.....	9
Amending the RTIP.....	10
Delivering Federally Funded Projects.....	11
4. RELATIONSHIP TO OTHER PLANNING DOCUMENTS	12
Regional Transportation Planning and Programming Process.....	12
Figure 5: Regional Transportation Planning and Programming Process	12
Consistency with Planning Documents.....	12
State Highway Operations and Protection Program (SHOPP).....	13
Relationship Between the Regional and Federal Transportation Improvement Programs	13

APPENDIX A: SANTA CRUZ COUNTY 2014 STIP PROPOSAL

APPENDIX B: RTIP PROJECT LISTING BY SPONSOR

APPENDIX C: PROJECTS COMPLETED SINCE 2012 RTIP ADOPTION

APPENDIX D: PERFORMANCE MEASURES

APPENDIX E: PROJECT PROGRAMMING REQUEST (PPR) FORMS (sent to CTC only)

APPENDIX F: ADOPTING RESOLUTION

1. INTRODUCTION

The Santa Cruz County Regional Transportation Commission (RTC), as the state-designated Regional Transportation Planning Agency (RTPA) for Santa Cruz County, is responsible for selecting projects to receive a variety of state and federal funds. Projects which have been selected by the RTC to receive funds over a five year period are included in the *Regional Transportation Improvement Program (RTIP)*. The RTIP is typically adopted every two years, with interim amendments made as needed.

The RTIP serves two primary purposes: 1) a tool to assist in monitoring the delivery of state and federally-funded projects; and 2) the RTC's proposal to the California Transportation Commission (CTC) for the region's share of funds from the State Transportation Improvement Program (STIP). Monitoring projects is especially critical due to the timely use of funds deadlines required by AB1012, SB45, the California Transportation Commission (CTC), and the Federal Highway Administration (FHWA) for most funding sources.

2014 Regional Transportation Improvement Program (RTIP) for Santa Cruz County

On December 5, 2013, the Santa Cruz County Regional Transportation Commission (RTC) adopted the *2014 Regional Transportation Improvement Program (RTIP)*, selecting projects to receive the region's State Transportation Improvement Program (STIP) programming target through FY18/19, as well as Regional Surface Transportation Program (RSTP) funds through FY13/14. Projects selected to receive new funds reflect the broad multimodal transportation needs in Santa Cruz County. They balance needs on the state highway system with very serious needs on local streets and roads. Projects were selected through a competitive process, which included evaluation of project benefits and consultation with Caltrans, local transportation entities, and the public. The 2014 RTIP includes projects that preserve existing transportation facilities, reduce congestion, fill gaps in the bicycle and pedestrian networks, and increase access to transit.

The 2014 RTIP also includes amendments to several previously approved projects. These include modifications to the scope, cost or schedule for several projects and the reprogramming of funds designated for the Monterey Bay Sanctuary Scenic Trail Network (MBSST) to specific sections of the trail. Shifting some projects to later years created capacity for new Santa Cruz County projects in the first three years of the STIP, with an emphasis on projects urgently needed to preserve the existing transportation system.

On March 20, 2014 the California Transportation Commission (CTC) concurred with the RTC proposals for STIP funds and included all of these important projects in the *2014 State Transportation Improvement Program (STIP)*, though the CTC moved some projects to later years than those originally proposed by project sponsors and the RTC. The RTC periodically amends the RTIP to reflect updated project information and exchange state funds for federal RSTP through the RSTPX program. *This document reflects programming and amendment actions taken by the RTC through May 1, 2014.*

Contents of the RTIP

The Santa Cruz County RTIP includes an overview of the RTIP development process (Chapter 1), a description of the RTC's proposal for the 2014 STIP (Chapter 2 and Appendix A), a description of

other uses for the RTIP (Chapter 3), a summary of how the RTIP relates to other state and federal planning and programming processes (Chapter 4), a list of projects that have been approved for funds by the RTC (Appendix B), a list of projects completed since adoption of the 2012 RTIP (Appendix C), a performance evaluation of the 2014 RTIP and projects that were proposed for 2014 STIP funds (Appendix D), and Project Programming Request (PPR) Forms for new and amended STIP projects (Appendix E – included with CTC submittal only).

RTIP and STIP Development Process

The process for developing the RTIP and STIP typically begins in the spring of odd numbered years when the CTC determines the financial assumptions to use in developing the STIP Fund Estimate. Based on those assumptions the California Department of Transportation (Caltrans) estimates the amount of certain state and federal revenues anticipated for transportation statewide over the next five years. The CTC releases the draft STIP Fund Estimate, as well as Guidelines for the development of the STIP, during the summer of odd years for public review and comment. The final fund estimate and guidelines are adopted by the CTC in late summer/early fall.

After projected state and federal transportation funds are split amongst Caltrans maintenance, administration, and operations; the State Highway Operation and Protection Program (SHOPP); various state transit programs; and Local Assistance programs, the balance is made available for the STIP. Seventy-five percent of the STIP funds are classified as “regional share” monies and programmed by regional agencies, such as the RTC. Caltrans identifies projects of statewide and interregional significance to receive the remaining twenty-five percent of STIP funds through the *Interregional Transportation Improvement Program (ITIP)*, which includes interregional state highway and rail projects. The RTC develops its RTIP based on the funds projected for Santa Cruz County. The RTC then develops the RTIP project list through a collaborative process with its committees, member agencies, and transportation planning partners. Any project proposed in the RTIP must be included in or be consistent with the *Regional Transportation Plan (2010 RTP adopted June 2010, 2014 RTP adoption June 2014)*.

Santa Cruz County’s list of projects proposed for STIP funds and supporting documentation is then submitted to the CTC. After considering proposals submitted by Regional Transportation Planning Agencies (RTPA) statewide, the CTC makes the final determination on which projects are included in the STIP, in which year they are programmed, and when to release (allocate) funds to individual projects. In years when STIP funding requests exceed projected funds, the CTC may decide not to accommodate all of a region’s proposed projects and instead redirect funds to other counties.

The CTC adopts the STIP in the spring of even numbered years. If the CTC approved projects include federal funds or are for projects which could affect air quality conformity, those projects are then incorporated into the *Metropolitan Transportation Improvement Program (MTIP)*, the federally-mandated programming document prepared by the Association of Monterey Bay Area Governments (AMBAG). Figure 1 is a diagram outlining the STIP adoption process.

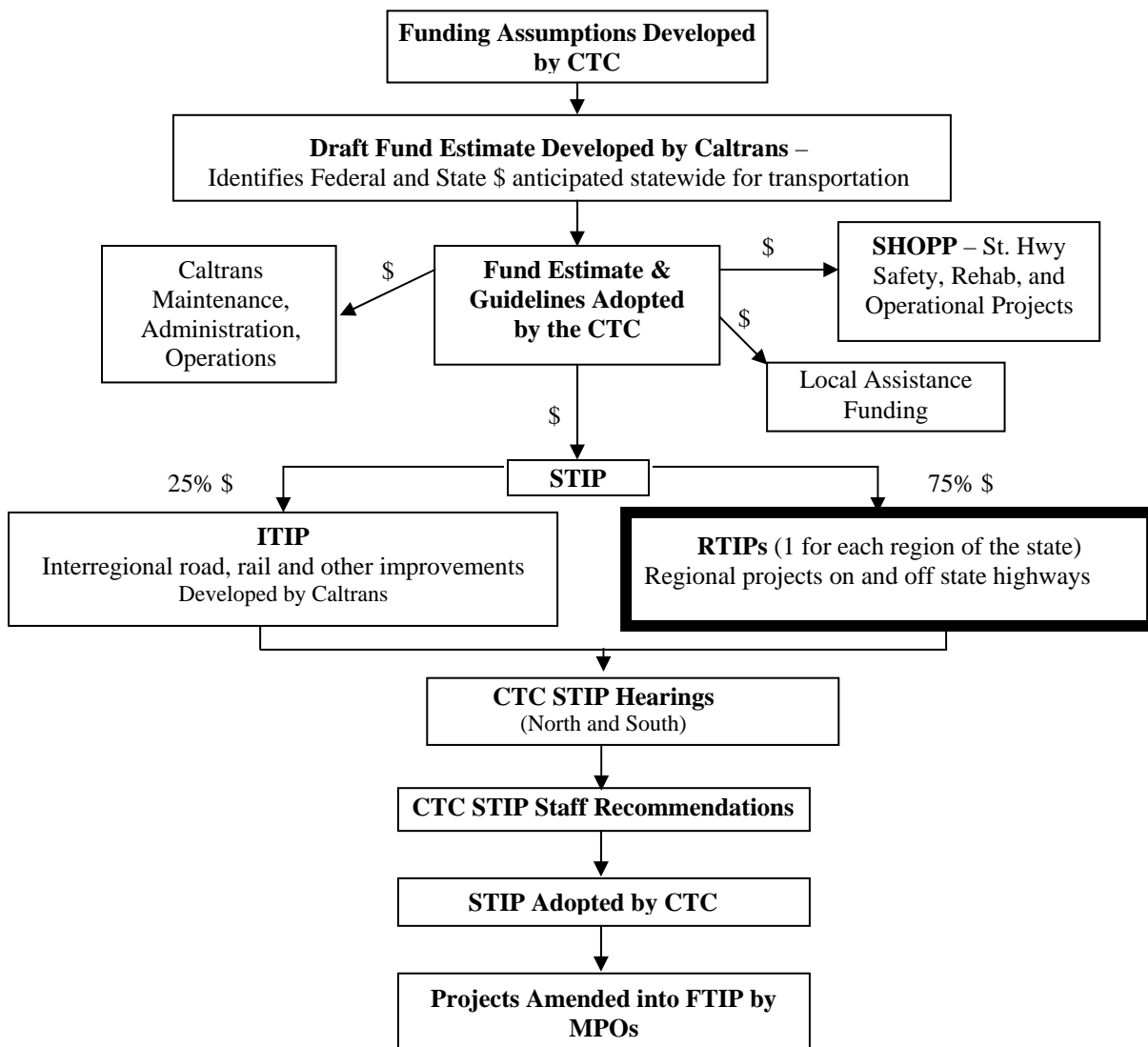
STIP Revenues

The total funds available over a five-year period are identified in the STIP Fund Estimate. For the 2014 STIP, revenues from 44% of the 17 cent/gallon state excise tax on gasoline (approved by the

legislature as part of the “gas tax swap” of 2010 and 2011) and funds from the Federal Trust Fund make up the bulk of funds anticipated for projects programmed in the STIP (approximately \$675 million/year statewide on average). With elimination of the Federal Transportation Enhancement (TE) program by Congress in 2012, approximately \$80 million per year in federal funds are no longer programmed in the STIP. Proposition 1B STIP bond revenues authorized by voters in 2006 have also been fully allocated by the CTC and are no longer available for STIP projects. Additionally since 2011, most state Public Transit Account funds no longer flow through the STIP.

The actual amount of funding that becomes available through the STIP does not always match the Fund Estimate. The actual amount of funding that will be available to STIP projects each year could vary significantly depending on actions at both the state and federal level. Events that have impacted the level and types of the transportation funds actually available for STIP projects in the past have included the diversion of transportation funds to the State General Fund, delayed repayment of prior loans, changes in tax revenues.

Figure 1: State Transportation Improvement Program (STIP) Adoption Process



2. PROPOSAL FOR STIP FUNDS

Projected STIP Funds for Santa Cruz County

Based on the 2014 State Transportation Improvement Program (STIP) Fund Estimate, the targeted share of new STIP funds for projects in Santa Cruz county through Fiscal Year 2018/19 is \$5,893,000. This represents two additional years of STIP funds, over what was programmed through FY16/17 in the 2012 Regional Transportation Improvement Program (RTIP).

2014 RTIP Proposal for New STIP

The 2014 RTIP reflects the broad multimodal transportation needs in Santa Cruz County. The RTC's proposal for the region's 2014 STIP target is a well balanced proposal to preserve, maintain, and improve the multimodal transportation system. As a basis for formulating proposals for STIP funds, the Regional Transportation Commission (RTC) and project sponsors considered the California Transportation Commission (CTC) funding guidelines and allocation priorities, unmet highway needs, additional funding needs for previously programmed projects, performance measures, project delivery, and goals and priorities identified in the *Santa Cruz County Regional Transportation Plan (RTP)*. Following a public hearing at its December 5, 2013 meeting, the RTC selected projects to receive the region's targeted share of STIP funds through FY18/19, as summarized in Figure 2 and Appendix A.

Figure 2: RTC Proposal for 2014 STIP Target
 (\$5,893,000 new funds)

PPNO	RTIP#	Agency	Title/Description	New STIP
73A	RTC 24f	SCCRTC/ Caltrans	Hwy 1 41st Ave-Soquel Ave Auxiliary Lanes and Chanticleer Bike/Ped Bridge (construction reserve)	\$2,000,000
4658	SC 25	Santa Cruz/ Caltrans	State Routes 1/9 Intersection Improvements (construction)	\$479,000
921	RTC 04	SCCRTC	Planning, Programming & Monitoring (PPM) (3 years of funding)	\$470,000
923	RTC 01	SCCRTC	Freeway Service Patrol: Highway 1 (2 years of funding)	\$300,000
2553	MTD 21	Santa Cruz METRO	ParaCruz Van Replacement/CNG vans and medium-duty gas fueled paratransit buses	\$345,000
2554	CAP 16	Capitola	Bay Avenue/Capitola Avenue Roundabout Intersection Modification (design)	\$59,000
2555	WAT 40	Watsonville	Airport Boulevard Improvements (1200 feet east of Westgate Drive/Larkin Valley Road to east of Hanger Way)/Reconstruct roadway, install new sidewalk, upgrade curb ramps and other pedestrian facilities	\$1,195,000
2556	WAT 41	Watsonville	Sidewalk Infill Harkins Slough Road and Main Street (Harkins Slough Road: east of Ohlone Parkway; and Main Street: Pennsylvania Dr-Pacific Blvd)	\$120,000
2557	CO 73	Santa Cruz Co.	Cassery Rd Bridge Replacement (over tributary of Green Valley Creek near Smith Rd intersection)	\$125,000
2558	CO 74	Santa Cruz Co.	Freedom Blvd Cape Seal (Hwy 1 to Pleasant Vly Rd)	\$800,000

Project Programming Request (PPR) Forms were submitted to the CTC as Appendix E. Additional project information is available within project applications, online at: <http://www.sccrtc.org/wp-content/uploads/2013/11/2014-RTIP-applicants-stp-rstp.pdf>

Amendments to Existing STIP Projects

As part of adoption of the 2014 RTIP, the RTC also amended existing STIP projects, as summarized in Figure 3 and Appendix A. Proposed changes to previously programmed STIP projects include: adding STIP funds for three projects carried over from the 2012 STIP (also shown in Fig. 2) and shifting previously programmed STIP funds to later years in some instances, **creating capacity for several new projects in the region to be programmed within the first three years of the STIP.**

With completion of the Master Plan for the Monterey Bay Sanctuary Scenic Trail Network (MBSST) in November 2013, the 2014 RTIP also reprograms funds, previously designated for the entire trail network, to specific sections of the trail.

Figure 3: Amendments to Existing STIP Projects
(Approved by RTC December 5, 2014)

PPNO	RTIP#	Agency	Project	Change
4658	SC 25	Santa Cruz	Rt 1/9 Intersection modifications	Add \$479K STIP
73A	RTC 24f	SCCRTC	Rt 1, 41st Ave/Soquel Av Aux Lns & bike/ped bridge	Add \$2M reserve; shift eng to FY15/16
921	RTC 04	SCCRTC	Planning, programming, and monitoring	Add \$470K FY17-19
1968	RTC 28	SCCRTC	Rt 1 Mar Vista bike/ped overcrossing	Shift ENV & CON funds to later years
1872	RTC 27	SCCRTC	Monterey Bay Sanctuary Scenic Trail Network (10S-041) MBSST	Split into 2 projects
2551	TRL 07SC	Santa Cruz	Monterey Bay Sanctuary Scenic Trail (MBSST): Segment 7 - Natural Bridges to Pacific Ave, bicycle/pedestrian trail	Split \$805k from MBSST/ppno1872
2552	TRL 18L	Santa Cruz	Monterey Bay Sanctuary Scenic Trail (MBSST): Segment 18 - Lee Road, 4000 feet east to City Slough Trail connection), bicycle/pedestrian trail	Split \$1,040k from MBSST/ppno1872
413	WAT 01	Watsonville	Rt 1 Harkins Slough Rd interchange (10S-041)	Shift funds out one year

2014 RTIP Development

The 2014 RTIP was developed in consultation with various stakeholders and partner agencies, including Caltrans, the Santa Cruz Metropolitan Transit District (SCMTD), the County of Santa Cruz, the cities of Capitola, Santa Cruz, Scotts Valley and Watsonville, and the RTC’s advisory committees.

In September 2013 the RTC issued a call for projects for the region’s targeted share of State Transportation Improvement Program (STIP) funds. Applications for STIP funds were due October

29, 2013. Projects were selected through a competitive process. Following evaluation of project benefits, review of projects by RTC advisory committees (Bicycle Committee, Elderly and Disabled Transportation Advisory Committee (E&D TAC), and Interagency Technical Advisory Committee (ITAC)), consideration of comment letters submitted by stakeholder groups and members of the public, as well as a public hearing at its December 5, 2013 meeting, the RTC adopted the *2014 Regional Transportation Improvement Program (RTIP)*. The CTC approved the RTC's funding and amendment requests and adopted the 2014 STIP at its March 20, 2014 meeting. While CTC approved new funding for all projects requested by the RTC, based on requests for STIP funds from agencies statewide, the CTC shifted some funds to slightly different years than originally proposed by project sponsors or the RTC.

As set forth in the California Transportation Commission (CTC) STIP Guidelines, the 2014 RTIP is based on the regional transportation plan that has been developed and updated pursuant to Government Code Section 65080, and a regionwide assessment of transportation needs and deficiencies. While geographic equity was taken into consideration in development of the 2014 RTIP, as prohibited in the STIP Guidelines, programming in the RTIP was not based on a formula distribution of the county share among agencies or geographic areas. **The 2014 RTIP is reflective of the Santa Cruz County Regional Transportation Plan, which calls for a balanced multimodal transportation system.**

Measuring Performance and Cost-Effectiveness

The CTC requires that each RTIP be evaluated for performance and cost-effectiveness at the system level. The evaluation is meant to demonstrate the effectiveness of the RTIP program.

Several factors were considered when evaluating projects, including consideration of how projects address the goals, policies, and targets developed by the RTC for the Regional Transportation Plan (RTP) update, and California Transportation Commission (CTC) and federal guidelines and performance measures. In most cases, quantitative data is not currently available. Therefore, qualitative information is used to evaluate each project's contribution towards regional and state transportation goals. Factors used to evaluate projects included:

1. Number of people served/cost-effectiveness
2. Safety (reduce collisions)
3. Access for all modes, especially to and within key destinations (increase travel options, reduce number or distance of trips)
4. Air pollution, greenhouse gas emissions and fuel consumption
5. Change in vehicle miles traveled
6. Change in reliability, frequency, and efficiency of transit
7. Change in travel time reliability and efficiency of the transportation system
8. Preservation of existing infrastructure or services
9. Change in passenger, freight and goods miles carried
10. Change in disparities in safety and access for people who are transportation disadvantaged due to age, income, disability or minority status
11. If projects are shown as "constrained" on the draft RTP Project List, approved by the RTC August 15, 2013, which will implement the Sustainable Communities Strategy (SCS) currently under development by AMBAG.

12. Consistency with the Complete Streets Guidelines, approved by the RTC September 5, 2013.
13. Deliverability (if there are barriers to the schedule)
14. Funding (if all other funding is secured and amount of match). Notably, the CTC will not allow partially funded phases of projects to be included in the STIP.
15. Where applicable - Consistency with the Monterey Bay Sanctuary Scenic Trail Network (MBSST) Master Plan

The Santa Cruz County performance measure report ([Appendix D](#)) reflects a system level evaluation of the 2014 RTIP projects as part of the larger RTP program of projects. Collectively, the 2014 RTIP advances regional goals and CTC performance measures and targets, including preservation of existing transportation facilities, congestion reduction, increased mobility, accessibility, and reliability, and greenhouse gas reductions.

Consultation with Caltrans

Consistent with the STIP Guidelines, Caltrans may nominate or recommend State highway improvement projects for inclusion in the RTIP. Caltrans can also identify any additional State highway improvement needs within the region that could reasonably be programmed within the three years beyond the end of the current STIP period. RTC staff met with Caltrans District 5 several times in 2013 to discuss highway projects that could be considered for inclusion in the 2014 STIP.

In September 2013, Caltrans District 5 submitted a list of highway projects that could be candidates for some STIP funds over the next 25 years to the CTC and RTC. However, since the RTC's annual share of STIP funds is approximately \$3.5 million, **it will never be feasible to fund most of these projects in the STIP.** The one project identified by Caltrans for the 2014 STIP was the **Highway 1 41st Avenue-Soquel Avenue Auxiliary Lanes and Chanticleer Bicycle/Pedestrian Bridge project (PPNO 73A)**. In 2012 the RTC and CTC programmed \$4 million of the region's share of STIP funds for the design and right-of-way phases of the project. Environmental review is being done as part of tiered environmental document for the Highway 1 Corridor, primarily funded with Regional Surface Transportation Program (RSTP) funds. Since the region's STIP share, even with an advance of future shares to the maximum allowed by the CTC, is insufficient to fully fund the construction phase of the project this STIP cycle (\$23 million is needed), the RTC instead voted to **reserve \$2 million of the region's 2014 STIP Target for construction** of the project and intend to program the balance in future STIP cycles.

The 2014 RTIP also increases STIP funds for the **Highway 1/9 Intersection** (PPNO 4658). The City of Santa Cruz is the lead agency for that project, with the City covering nearly 85% of the project cost from local funds.

While addressing highway needs is important to the Regional Transportation Commission (RTC), with over \$5.7 billion in projects identified in the long range Regional Transportation Plan (RTP) as needed to operate, maintain and improve the region's multimodal transportation system through 2035, including an existing backlog of over \$300 million in system preservation needs for the local road system, it is clear that existing state and federal funds are severely insufficient. Since it is impossible to fully fund all of the projects needed to preserve and improve the transportation system, the RTC's 2014 RTIP reflects the multimodal system needs, rather than just those of the highway system.

Transportation Funds Insufficient to Meet the Region's Needs

Historically, the STIP was the largest pool of funds available for major capital transportation projects. In the past, STIP funds have been used to fund several major projects in Santa Cruz County, such as the Highway 1 Highway 1/Mission Street Widening project, the MetroBase Consolidated Bus Operations Facility, Highway 1/17 Merge Lanes project, and major roadway repair projects throughout the county. However, as the costs to maintain the state highway system have increased and the cost of construction projects has increased, the amount of funding available for STIP projects has significantly diminished.

Funding designated for transportation statewide continues to fall far below the levels required to implement most of the projects necessary to reduce congestion, improve safety, expand mobility, and maintain the existing transportation system.

The Santa Cruz County *Regional Transportation Plan (RTP)* identifies \$5.7 billion in transportation projects and programs needed to maintain and improve the region's transportation system through 2035. However, only \$2.8 billion in funds are likely to be generated over that same time period, or approximately \$128 million/year and that assumes that voters will approve a new transportation sales tax measure in 2016. Of those funds, RTC has discretion over only \$7 million per year from STIP and RSTP. As such, without a significant infusion of funds from state and federal sources, and/or voter-approval of other new transportation funding sources, **less than half** of the identified needs can be met.

As the availability of state and federal funding sources has become less reliable, it becomes increasingly important to look to alternate options for funding transportation projects. The RTC and local jurisdictions continue to evaluate options for raising local revenues and advocating for increased funding at the state and federal level to address some of the backlog of needs.

3. OTHER 2014 RTIP FEATURES

Programming Other Federal and State Funds

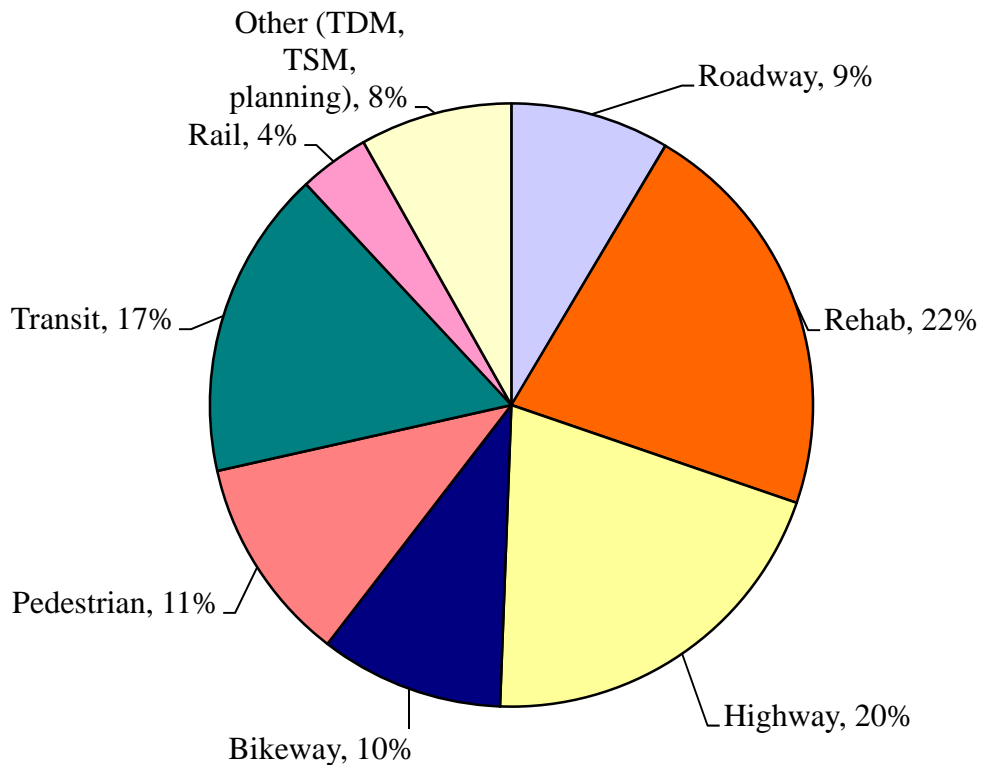
In addition to State Transportation Improvement Program (STIP) funds, the Regional Transportation Commission (RTC) is responsible for selecting projects to receive various other state and federal funds. These projects are listed in Appendix B.

The RTC has continually demonstrated a strong commitment to maintaining a multimodal transportation system. Figure 4 shows how the RTC has programmed discretionary funds, by transportation mode, since 1992, including new programming proposed in this document. A summary of RTC-funded projects that have been completed since adoption of the 2012 RTIP (December 2011) is included in Appendix C.

Figure 4: Funds RTC Programmed by Mode
(\$200 Million)

RSTP, CMAQ, TE, ARRA, FY1992-2014
STIP 1998-2019

Does not include TDA Funds or projects selected by the CTC prior to SB45 (ex. Mission St Widening and Hwy 1/17 Merge Lanes Project funds)



Emphasis on Timely Project Delivery

All STIP and most federally-funded projects listed in this RTIP are subject to requirements for timely project delivery. Senate Bill 45, enacted in 1998, set strict “use it or lose it” spending deadlines for projects programmed in the STIP. In keeping with the spirit of SB 45, the California Transportation Commission (CTC) has specified that projects must request an allocation of STIP funds by the end of

the fiscal year in which funds are programmed and award a contract for those funds within six months. STIP amendments must be made one fiscal year in advance. A late project's only recourse is to request a one-time extension of up to 20 months--and this extension is not automatic. Policies regarding STIP project implementation are outlined in the CTC STIP Guidelines.

Assembly Bill 1012, signed into law in October 1999, extended the "use it or lose it" deadlines to the federal Regional Surface Transportation Program (RSTP) and Congestion Mitigation and Air Quality (CMAQ) Improvement Program. Any region with more than three years worth of unspent RSTP or CMAQ funds could have these monies reprogrammed to other agencies by the CTC. Additionally, since 2005 the Federal Highway Administration (FHWA) has implemented more strict deadlines for using federal funds. Project sponsors must regularly invoice for their federal funds and initiate right-of-way or construction within 10 years of starting preliminary engineering/environmental work (the "10-year Rule") or risk being labeled "inactive", losing or having to repay funds for their projects. The combined result of these rules is that on-time project delivery is more critical for all state and federally funded projects. The RTIP is one of the documents that RTC uses to assist with its project tracking efforts.

In order to ensure that funding is not lost to local projects, the RTC has established a Monitoring/Assistance Program that:

- Assures timely, cost-effective implementation of projects
- Reviews project milestones
- Assists local agencies with trouble shooting, especially with state and federal agencies
- Helps lead agencies obtain the resources and expertise needed
- Includes a regular, streamlined reporting process
- Devotes extra attention to STIP and state highway projects

The RTC's goal is to provide this enhanced level of project information and assistance, without creating an excessive workload for project sponsors or too much oversight of local agencies.

Amending the RTIP

If information about a project funded with STIP or RSTP changes during the RTIP period, RTC requires project sponsors to request an RTIP amendment. The RTC then forwards these amendments to the CTC for inclusion in the STIP and/or to the Association of Monterey Bay Area Governments (AMBAG) for inclusion in the federal programming document (the *Metropolitan Transportation Improvement Program*), as appropriate. In general, amendments that result in scope changes, project delays, or add or remove STIP or RSTP funds are presented to the RTC as a formal amendment. RTC policies for amendments are consistent with those outlined by Caltrans and the CTC.

Administrative Amendments

Some minor amendments do not require a formal vote by the regional transportation planning agency (RTC) or metropolitan planning organization (AMBAG). These minor changes to existing project listings can include minor changes to the project description, funding information, and schedule information, as long as the changes do not add or delete projects, adversely affect air quality, delay implementation of Transportation Control Measures, impact financial constraint, nor result in major scope changes.

Delivering Federally Funded Projects

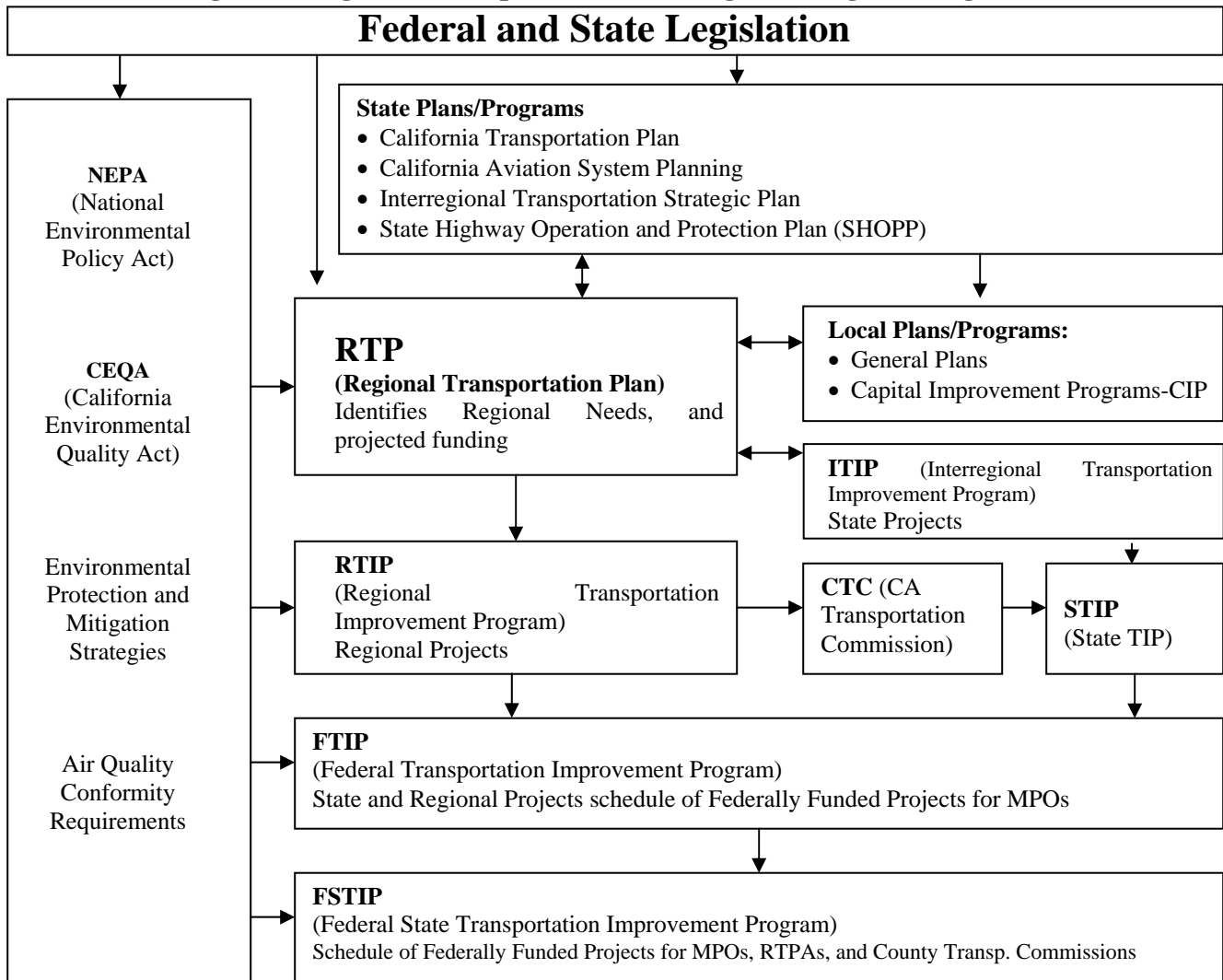
Before a project sponsor can receive reimbursement for federal funds programmed to their project they must follow several steps to ensure applicable state and federal laws are followed. These steps are outlined in the Caltrans Local Assistance Procedures Manual (LAPM) (available online at: <http://www.dot.ca.gov/hq/LocalPrograms/public.htm>) and the Caltrans Division of Mass Transportation guidelines.

4. RELATIONSHIP TO OTHER PLANNING DOCUMENTS

Regional Transportation Planning and Programming Process

The regional transportation planning and programming process is a complex, cooperative process that includes all levels of government with the opportunity for input from stakeholders at each level. Figure 5 shows the flow of the regional transportation planning and programming process.

Figure 5: Regional Transportation Planning and Programming Process



Consistency with Planning Documents

The RTIP implements the *Santa Cruz County Regional Transportation Plan (RTP)*. Projects are evaluated based on how well they meet a combination of regional, state, and federal goals, policies, and performance measures/targets. Additional information about the measures used to select projects is described in Appendix D.

State Highway Operations and Protection Program (SHOPP)

Many transportation projects along the state highway system are not included in the RTIP. Instead, Caltrans programs many safety, operational, and system maintenance and transportation management projects in the State Highway Operations and Protection Program (SHOPP). The SHOPP is the CTC's highest priority for State Highway Account funds. Operational improvement projects included in the SHOPP do not expand the design capacity of the system and are intended to address spot congestion. Examples include curve and vertical alignment corrections, channelization, turnouts, auxiliary lanes and shoulder widening.

When SHOPP funds are insufficient, the RTC may nominate safety and operational projects for STIP programming through the RTIP. For example the Highway 1 41st Avenue to Soquel Avenue Auxiliary Lanes project is eligible for SHOPP funds, but SHOPP funds are currently insufficient to address this type of operational improvements.

Transportation management systems (TMS) improvements can address highway congestion and manage transportation systems. These projects include Transportation Management Centers and field elements, such as traffic sensors, message signs, cameras, and ramp meters that upgrade the existing facilities. The RTC continually works with Caltrans to investigate the expansion of TMS elements along state highways in the region, especially Highways 1 and 17.

Relationship Between the Regional and Federal Transportation Improvement Programs

In compliance with federal planning law, projects approved for federal transportation funds or considered "regionally significant" (on a principle arterial highway or fixed guideway which offer a significant alternative to regional highway travel and normally included in the regional transportation model) must be included in the Federal Transportation Improvement Program (FTIP). This includes projects approved by the RTC and CTC for federal State Transportation Improvement Program (STIP) and Regional Surface Transportation Program (RSTP), as well as projects approved for Highway Safety Improvement Program (HSIP), Highway Bridge Program (HBP), State Highway Operation and Protection Program (SHOPP), Federal Transit Administration programs (FTA), and other federal highway and transit funds by Caltrans, the California Transportation Commission (CTC), Congress, FTA or FHWA.

As the federally-designated metropolitan planning organization (MPO) for the Monterey Bay Area, the Association of Monterey Bay Area Governments (AMBAG) assembles the tri-county FTIP, known as the *Monterey Bay Metropolitan Transportation Improvement Program* (MTIP). AMBAG prepares the MTIP in close coordination with the RTC, the Transportation Agency for Monterey County, Council of San Benito County Governments, the local transit districts, and the affected cities and counties.

Amendments to the scope, schedule, or cost of projects must be approved by the responsible entity (e.g. RTC, CTC, Caltrans) and included in the Monterey Bay MTIP. Updates to STIP funds must first be approved by the RTC and CTC before being included in the MTIP.

Appendix A: Santa Cruz County 2014 STIP

Adopted by the Santa Cruz County Regional Transportation Commission (SCCRTC) 12/5/13, amended 4/14

Adopted by the CTC 3/20/14

All figures in 000's (thousands)

Agency	PPNO	RTIP #	Project	RTC request	NEW STIP	TOTAL STIP	Project Totals by Fiscal Year						Totals by Component				
							Prior	14-15	15-16	16-17	17-18	18-19	R/W	Const	E&P	PS&E	
Capitola	2363	CAP 15	Park Avenue sidewalks	Carryover	0	200	200	0	0	0	0	0	0	0	200	0	0
Capitola	2554	CAP 16	Bay Avenue/Capitola Avenue Roundabout Intersection Modification (design)	New project	<u>59</u>	59	0	<u>59</u>	0	0	0	0	0	0	0	0	<u>59</u>
Santa Cruz	4658	SC 25	Rt 1/9 Intersection modifications	Add \$479K CON	<u>479</u>	1,329	0	0	<u>1,329</u>	0	0	0	0	0	<u>1,329</u>	0	0
Santa Cruz Co	2367	CO 62	Nelson Rd PM 2.0 storm damage repair	State-only funds (SOF)		1,189	0	1,189	0	0	0	0	244	945	0	0	
Santa Cruz Co	2368	CO 63	Redwood Lodge Rd PM 1.65 storm damage repair	State-only funds (SOF)		850	0	850	0	0	0	0	0	850	0	0	
Santa Cruz Co	2557	CO 73	Cassery Rd Bridge Replacement	New project	<u>125</u>	125	0	0	0	<u>125</u>	0	0	0	<u>125</u>	0	0	
Santa Cruz Co	2558	CO 74	Freedom Blvd Cape Seal (Hwy 1 to Pleasant Vly Rd)	New project	<u>800</u>	800	0	<i>original request</i>	<u>800</u>	0	0	0	0	<u>800</u>	0	0	
SCCRTC	921	RTC 04	Planning, programming, and monitoring	Add \$470K	<u>470</u>	1,095	325	150	96	<u>175</u>	<u>175</u>	<u>174</u>	0	<u>1,095</u>	0	0	
SCCRTC	923	RTC 01	Freeway Service Patrol	Add \$300K	<u>300</u>	300	0	0	<u>150</u>	<u>150</u>	0	0	0	<u>300</u>	0	0	
SCCRTC	1968	RTC 30	Rt 1 Mar Vista bike/ped overcrossing	Shift funds to later years		6,564	0	0	500	1,635	4,429		1,060	4,429	500	575	
SCCRTC	73A	RTC 24F	Rt 1, 41st Ave/Soquel Av Aux Lns & bike/ped bridge	\$2M reserve; shift funds	<u>\$2M reserve</u>	4,000	0	0	4,000	0	0	0	1,430	reserve (\$2M)	0	2,570	
SCMTD	2553	MTD 21	ParaCruz Van Replacement	New project	<u>345</u>	345	0	<u>345</u>	0	0	0	0	0	<u>345</u>	0	0	
Scotts Valley	2365	SV 25	Vine Hill School Rd & Tabor Dr sidewalks & bike lns	carryover		400	400	0	0	0	0	0	0	400	0	0	
Watsonville	413	WAT 01	Rt 1 Harkins Slough Rd interchange (10S-041)	Shift funds to later years		7,340	0	0	0	<u>462</u>	<u>6,878</u>	0	462	6,878	0	0	
Watsonville	2366	WAT 38	Airport Blvd at Freedom Blvd modifications	Carryover		850	0	<i>original request</i>	<u>850</u>	0	0	0	0	850	0	0	
Watsonville	2555	WAT 40	Airport Boulevard Improvements (east of Westgate Drive/Larkin Valley Road to east of Hanger Way)	New project	<u>1195</u>	1,195	0	0	<i>original request</i>	<u>1,195</u>	0	0	0	<u>1,195</u>	0	0	
Watsonville	2556	WAT 41	Sidewalk Infill Harkins Slough Road and Main Street	New project	<u>120</u>	120	0	0	<u>120</u>	0	0	0	0	<u>120</u>	0	0	
SCCRTC	4872	RTC 27	Monterey Bay Sanctuary Scenic Trail Network (10S-041)	Delete- Split into 2 projects		1,845	0	1,845	0	0	0	0	0	1,805	0	40	
Santa Cruz	2551	TRL07SC	Monterey Bay Sanctuary Scenic Trail Network: Segment 7 Natural Bridges Dr to Pacific Ave	Split \$805k from MBSST (1872)		805	0	0	0	805	0	0	0	805	0	0	
Watsonville	2552	TRL18L	Monterey Bay Sanctuary Scenic Trail Network: Lee Rd to Slough Trail Connection	Split \$1040k from MBSST (1872)		1,040	0	90	950	0	0	0	0	950	0	90	

BOLD/UNDERLINE=New 2014 STIP funds

New 2014 STIP Programmed Reserve for Hwy1 Aux

Total	28,606	925	2683	8795	4547	11482	174
3,893							
2,000							

APPENDIX B: RTIP PROJECT LISTING BY SPONSOR

The RTIP compiles information on projects and programs which are currently being implemented or are scheduled to be implemented. They include projects funded from the Regional Share of the STIP, federal Regional Surface Transportation Program (RSTP), and state Regional Surface Transportation Exchange Program (RSTPX). These projects are mapped and listed on the following pages.

Format of project lists

The RTIP project lists include:

- The name of the agency responsible for project implementation.
- The project title and a phrase describing the type and scope of the project.
- Unique project identification numbers, including numbers designated by the RTC which reflect the project sponsor (Proj No), as well as project numbers designated by Caltrans for STIP projects (PPNO)
- Any appropriate funding restriction or designation, including projects approved for state-only STIP funding (SOF).
- The source and amounts of local or other non-STIP funds, if any, committed to project.
- Year funds are available and the amount of each funding source designated for: (1) environmental studies and permits (Envl); (2) plans, specifications, and estimates – design (Design); (3) right-of-way acquisition (ROW); and (4) construction and construction management and engineering, including surveys and inspection, (Const), as well as support costs for Caltrans projects.
- Estimated total cost.
- Comments on the funding history or special conditions for the project.

Funds that have already been allocated by the California Transportation Commission (CTC) or obligated through Caltrans are shown under the column heading “Obl Ttl”.

Years Covered

The years covered in this 2014 RTIP correspond to the years of the funding programs. For STIP projects, the program runs through FY 2018/19. As of December 5, 2013, RSTP funds have been programmed through FY13/14.

Acronym Guide

This guide lists agency, program, fund source, and other acronyms found in the project lists and/or elsewhere in the RTIP.

Fund Sources

AB2766	Assembly Bill 2766-Motor Vehicle Emissions Reduction Grant Program (Local)
Add'l Need	Additional funds needed to fully fund project. Project sponsors responsible for securing the additional funds
ARRA	American Recovery and Reinvestment Act (Federal)
BTA	Bicycle Transportation Account (State), formerly Bicycle Lane Account (BLA)
CMAQ	Congestion Mitigation and Air Quality (CMAQ) Improvement Program (Federal)
CMIA	Corridor Mobility Improvement Account (CMIA)
Earmark	Federal funds designated to specific projects in federal transportation acts and bills
EcoAction	Ecology Action, local non-profit funds (Local)
FEMA/OES	Federal Emergency Management Agency/Office of Emergency Services (Federal/State)
FSP Program	State funding designated specifically for FSP and administered by Caltrans
FTA	Federal Transit Administration, including sections 5307 (formula capital/operations), 5309 (discretionary capital), 5310 (elderly/disabled), and 5311 (rural capital/operations) funds (Federal)
HBRR	Highway Bridge Replacement and Rehabilitation Program (Federal)
HES	Hazard Elimination for Safety Program (Federal)
HITT	High-Intensity Transit Tier (Federal)
ITIP	Interregional Improvement Program (State)
Local	Local funds from a variety of sources (Local)
Local Gas Tax	Local apportionment of state excise gas tax (Local)
Prop 116	Proposition 116 Rail Funds (State)
Prop 1B	Proposition 1B funds (State)
PTA	Public Transportation Account (State)
RDA	Redevelopment Agency (Local)
Rec Trails	Recreational Trails program (Federal)
RSTP	Regional Surface Transportation Program (Federal)
RSTPX	RSTP federal funding exchanged for state funding (State)
RTC Rsrv	Santa Cruz County Regional Transportation Commission reserve funds (Local)
Rule 431	Assembly Bill 431 Air Quality Funds (Local fund source through MBUAPCD)
SAFE Reserves	Service Authority for Freeway Emergencies funds, generated by a \$1 Motor Vehicle License Fee, reserves
SHA	State Highway Account (State)
SHOPP	State Highway Operations and Protection Plan
SR2S	Safe Routes to Schools Program (State/Federal)
St P&R	California Department of Parks and Recreation (State)
St Riverways	Proposition 50 California River Parkways Grant Program
STIP	Regional Share of STIP (State and Federal source, depending on project size/type)
STIP(AB3090)	Reimbursement with STIP for having advanced project with other funds
STIP(GF)	Grandfathered Regional Share of STIP, funds programmed prior to 1998 STIP
STIP G-12	Caltrans funds to cover project cost increases
STIP(proposed)	STIP funds proposed this funding cycle
STIP(SOF)	STIP targeted as State Only Funds (CTC decides at time of allocation if SOF avail.)

STIP (TE)	Regional Transportation Enhancement Program (Federal) preMAP21)
TCRF	Transportation Congestion Relief Fund (State), from TCR Act
TDA	Transportation Development Act (Local)
TEA	Regional Transportation Enhancement Activities Program (Federal) from TEA-21
TSM	Transportation Systems Management (old state fund source and program)

Lead Agencies and Project Sponsors

AMBAG	Association of Monterey Bay Area Governments
CAP	City of Capitola
CO	County of Santa Cruz
CT	California Department of Transportation (Caltrans)
CTC	California Transportation Commission
EA	Ecology Action (requires public agency sponsor)
MBUAPCD	Monterey Bay Unified Air Pollution Control District
MTD	Santa Cruz Metropolitan Transit District
PVTMA	Pajaro Valley Transportation Management Association
RTC	Santa Cruz County Regional Transportation Commission
SC	City of Santa Cruz
SP	California Department of Parks
SV	City of Scotts Valley
UCSC	University of California at Santa Cruz
WAT	City of Watsonville

Project Phases, Numbers, and Other Abbreviations

Const	Construction and construction management and engineering, including surveys and inspection
Design	Design - Preparation of plans, specifications, and estimates (PS&E)
Envl	Environmental studies and permits: Project approval and environmental document (PA & ED)
Obl Ttl	Total amount of funds that have been obligated – either through Caltrans E-76 or STIP Allocations. <u>Only tracked for RTC discretionary funds</u> (CMAQ, RSTP, RSTPX, STIP, TEA)
PM	Post mile
PPNO	STIP designated Project Programming Number
ROW	Right-of-way acquisition (also R/W)
RTE	Route Number if on the State highway system
Src	Source- Funding source
Years	Years shown (Prior, 10/11, 11/12, etc) reflect the fiscal year funds will be available to a project (based on projected STIP funds or projected Federal Appropriations). Some projects have experienced delays and will actually obligate funds in later years. Those projects may be subject to use-it-or-lose-it deadlines outlined in AB1012. The FTIP tracks the anticipated year federal funds will actually be used.

Other Acronyms and Abbreviations in the RTIP

CHP	California Highway Patrol
CTC	California Transportation Commission
EIR	Environmental Impact Report

FHWA	Federal Highway Administration
FSP	Freeway Service Patrol
FTIP	Federal Transportation Improvement Program (FTIP)
FTA	Federal Transit Administration
FY	Fiscal Year (State FY is July 1-June 30; Federal FY is October 1-September 30)
HOV	High Occupancy Vehicle Lane (carpool or diamond lanes)
I/C	Interchange
MPO	Metropolitan Planning Organization (Federally designated)
MTIP	Metropolitan Transportation Improvement Program (also referred to as the FTIP)
MTIS	Major Transportation Investment Study
PA/ED	Project Approval/Environmental Document
RIP	Regional Improvement Program (same as regional share of STIP)
RTC	Santa Cruz County Regional Transportation Commission
RTIP	Regional Transportation Improvement Program
RTP	Regional Transportation Plan
RTPA	Regional Transportation Planning Agency (State designated)
SCCRTC	Santa Cruz County Regional Transportation Commission
S/W	Sidewalk
\$M	Millions of dollars
\$K	Thousands of dollars

2014 Regional Transportation Improvement Program

City of Capitola

Proj No: CAP 11

Clares Street Traffic Calming

Location

Const Sched: 2013

Est. End: 2015

PPNO: NA

Implementation of traffic calming measures: chicanes, center island median, new bus stop, and road edge landscape treatments to slow traffic. Construct new safe, accessible ped x-ing at 42nd and 46th Av.

Clares Street from Wharf Road to 41st Ave.

Fund Source	Total/source	Obl Ttl	Envl	Design	ROW	Const	Other	ROWSup	Const Sup	PriorYrs	12/13	13/14	14/15	15/16	16/17	17/18	18/19
Local	325		5	70		250				75	250						
RSTPX	100					100				0	100						
Totals	425		5	70		350				75	350						

Comments 5/6/10: \$100k RSTPX shifted to CAP 10 - Capitola Rd Traffic Calming, shift Const funds to FY12/13.4/07 RTC added \$200k RSTP. Exchanged 6/18/09. \$60k in developer fees lost when Rispin Mansion project dropped. \$300K RDA lost do to elimination of RDAs; City may fund in 12/13. Design 50% done 4/12.

Proj No: CAP 12

38th Avenue Reconstruction

Location

Const Sched: Spring 2014

Est. End: Fall 14

PPNO: 2202

Reconstruct roadway and construct 470 feet of curb, gutter, sidewalk, and Class 2 bicycle lanes.

38th Avenue: approx 100 feet south of Brommer St to Capitola Rd.

Fund Source	Total/source	Obl Ttl	Envl	Design	ROW	Const	Other	ROWSup	Const Sup	PriorYrs	12/13	13/14	14/15	15/16	16/17	17/18	18/19
Local GF	158		36	97	25					158							
RSTPX	438	438				438				0	438						
Totals	596	438	36	97	25	438				158	438						

Comments 10/13: ROW delays, requires removal of parking or additional ROW. May construct bicycle lanes now and sidewalks at later date. May include video loops to improve bicycle detection at Capitola Rd/38th intersection if funding allows. 6/4/09: RTC approved \$438k RSTP. Exchanged 6/18/09. 2/7/08 RTC proposed for \$135k new 2008 STIP funding - NOT approved by CTC.

Proj No: CAP 15

Park Avenue Sidewalks

Location

Const Sched: 5/15

Est. End: 9/15

PPNO: 2363

Installation of sidewalks, plus crosswalks at Cabrillo and Washburn to improve access to transit stops. Links Cliffwood Heights neighborhood to Capitola Village. Currently only 4 short segments of sidewalk exist.

Park Avenue - Wesley St to McCormick Ave

Fund Source	Total/source	Obl Ttl	Envl	Design	ROW	Const	Other	ROWSup	Const Sup	PriorYrs	12/13	13/14	14/15	15/16	16/17	17/18	18/19
Local	230		27	67	10	126				0		27	203				
STIP	200					200				0		200					
Totals	430		27	67	10	326				0		227	203				

Comments 12/1/11 - RTC approved \$200k STIP to fill gaps (1800 ft) from McCormick Ave to Wesley St, approved by CTC 3/29/12. Formerly RTP#CAP-P04. No longer STIP TE, just STIP as of FY13/14, to seek SOF. 5/1/14 RTC concurred with Capitola's STIP CON allocation extension request- to be considered by CTC June 2014 or \$200K STIP will lapse. Delayed due to local fund shortfalls. City intends to submit TDA claim to fund \$100K of CON (currently shown as "local").

Proj No: CAP 16

**Bay Avenue/Capitola Avenue Intersection
Modifications/Roundabout**

Location

Const Sched: 9/15

Est. End: 3/16

PPNO: 2554

Multimodal improvements to intersection. Roundabout.

Bay Avenue at Capitola Avenue

Fund Source	Total/source	Obl Ttl	Envl	Design	ROW	Const	Other	ROWSup	Const Sup	PriorYrs	12/13	13/14	14/15	15/16	16/17	17/18	18/19
Add'l Need	460					460				0					460		
Local	150		8		70	72				0		8	70		72		
RSTP	31			31						0			31				
STIP	59			59						0			59				
Totals	700		8	90	70	532				0		8	160		532		

Comments 2014 RTIP: \$90K approved by RTC 12/5/13 (\$59K STIP, balance RSTP) for design. Move design to FY14/15 (3/6/14 and 4/3/14). Previously RTP#CAP-P08.

Proj No: CAP 17

**Upper Pacific Cove Parking Lot Pedestrian Trail and Depot
Park Metro Development**

Location

Const Sched: 3/15

Est. End: 6/15

PPNO:

Construct 4 foot wide pedestrian pathway along City owned Upper Pacific Cove Parking lot, adjacent to rail line (680'). Includes new signal for ped crossing over Monterey Avenue. Includes a new metro shelter located and landscaped setting along the rail corridor/Park Ave.

Upper Cove park lot to Monterey Ave/Park Ave intersection.

Fund Source	Total/source	Obl Ttl	Envl	Design	ROW	Const	Other	ROWSup	Const Sup	PriorYrs	12/13	13/14	14/15	15/16	16/17	17/18	18/19
Local	100		5	40		55				0		5	95				
RSTP	200					200				0			200				
Totals	300		5	40		255				0		5	295				

Comments 2014 RTIP: RTC approved \$200k 12/5/13.

City of Santa Cruz

Proj No: SC 07

Broadway-Brommer Bike/Ped Path (Arana Gulch Multiuse Trail)

Location

Const Sched: 9/2013

Est. End: 11/2014

PPNO: 1822

Install multipurpose trail through Arana Gulch to connect to existing class 2 facilities.

Broadway/Frederick to Brommer Street/7th Ave. through Arana Gulch

Fund Source	Total/source	Obl Ttl	Envl	Design	ROW	Const	Other	ROWSup	Const Sup	PriorYrs	12/13	13/14	14/15	15/16	16/17	17/18	18/19
CMAQ	262	262	262							262							
Local	4,005			525		3,480				525	3,480						
RSTPX	352	352		140		212				140	212						
Rule 431	25		25							25							
STIP (TE)	2,430	2,430				2,430				0	2,430						
TDA	21	21	21							21							
TSM	12	12	12							12							
Totals	7,106	3,076	320	665		6,122				984	6,122						

Comments 2014 RTIP: \$150k RSTP approved by RTC 12/5/13, exchanged for RSTPX 3/6/14. 5/7/13: Advance allocation of STIP TE approved by CTC; bids received 8/26/13. 7/13 Local fund info updated to match Finance Letter, County contribution shown as local. May need additional \$300k (10/13). 5/12-RTC shifted CON to FY13/14 (CTC approved June 2012), City still hopes to construct Spring 2013. Project approved by Coastal Commission 12/11. 3/3/11: RTC shifted construction funds to FY12/13. 5/6/10: Construction funds (including STIP TE) shifted to FY11/12. May request allocation in FY10/11 once approved by Coastal Commission. 2010 RTIP: Program add'l 2010 STIP TE target (\$1.1M). Add'l funds to come from County RDA, Excess Prop Sale, TIF, or pending BTA-grant. Prior: Originally joint project w/County (Co obligated \$17.7k of CMAQ in 1994). \$225k CMAQ changed to STP 5/96. \$620k approved by RTC 5/1/97. \$380k CMAQ approved 5/00. \$380k STP changed to CMAQ (from Elec Bike) 7/00. 7/01 Admin amend to shift some construction funds to Env'l and Eng phases. STPX approved by RTC 9/4/03. \$1336K CMAQ changed to STIP TE 6/04. STIP TE shifted to FY06/07 on 2/17/05. \$62 CMAQ changed to RSTP 3/17/05. 2006 RTIP: Shifted RSTP and STIP (TE) const. to 07/08. 4/07 construction shifted to FY08/09; RSTP shifted to const. FTIP 5/06: Shifted \$15K in RSTP from ROW to construction. 2/7/08 RTC shifted construction to FY09/10 - approved by CTC 5/29/08. Arana Gulch Master Plan EIR completed Spring 2008. 3/5/09 RTC approved shift of TE to FY10/11 - CTC approved 6/11/09. \$62K RSTPX approved 10/7/10.

Proj No: SC 25

Hwy 1/9 Intersection Modifications

Location

Const Sched: 6/15

Est. End: 6/16

PPNO: 4658

Intersection modifications including new turn lanes, bike lanes/shoulders. Includes adding second left-turn lane on Highway 1 southbound to Highway 9 northbound; second northbound through lane and shoulder on northbound Highway 9, from Highway 1 to Fern Street; a right-turn lane and shoulder on northbound Highway 9; through-left turn lane on northbound River St; replace channelizers on Highway 9 at the intersection of Coral Street; sufficient lane width along the northbound through/left turn lane on Highway 9 from Fern Street to Encinal Street; new sidewalk along the east side of Highway 9 from Fern Street north to Encinal Street; new through/left turn lane on southbound Highway 9; Traffic Signal interconnect to adjacent signals. (Caltrans project ID - EA05-46580)

Hwy 1 (PM 17.5/17.7) at Hwy 9 (PM 0.0-0.2).

Fund Source	Total/source	Obl Ttl	Envl	Design	ROW	Const	Other	ROWSup	Const Sup	PriorYrs	12/13	13/14	14/15	15/16	16/17	17/18	18/19
Local	4,471		200	600	700	2,971				0	200		1,300	2,971			
RDA	400		400							400							
STIP	1,329					1,329				0				1,329			
Totals	6,200		600	600	700	4,300				400	200		1,300	4,300			

Comments 2014 RTIP: Additional \$479k STIP approved by RTC 12/5/13. 12/1/11- RTC approved \$850K STIP, approved by CTC 3/29/12 - 5/12 updated RTIP to shift funds to later years to match CTC adopted STIP. May seek additional \$500k. Seeking design exceptions from CTs and awaiting CT sign-off of enviro doc. CT finished PSR in 2001. RTC programmed \$650 to envl in 2002 RTIP, but CT HQ did not include proposed ITIP funding (\$246), so project dropped out of 2002 STIP & RIP funds went into reserve. 7/04 - City hired a consultant to do envl and engineering for project, took over as lead (Formerly CT 29). Proposed 2006 RTIP added \$1088K in STIP funds - NOT appvd by CTC. 4/07 Proposal: \$500K STIP for design - NOT approved by CTC; City committed to fund balance of project with developer fees and other funds. Scope changes: Bike/ped crossing of Highway 1 done as separate project. Park & Ride lot to be done as separate project.

Proj No: SC 42

Soquel Ave at Frederick St Intersection Modifications

Location

Const Sched: 9/14

Est. End: 3/15

PPNO:

Widen to improve eastbound through-lane transition on Soquel Ave and lengthen right-turn pocket and bicycle lane on Frederick St. Upgrade access ramps.

Soquel Ave at Frederick

Fund Source	Total/source	Obl Ttl	Envl	Design	ROW	Const	Other	ROWSup	Const Sup	PriorYrs	12/13	13/14	14/15	15/16	16/17	17/18	18/19
Local	112			20	30	62				0	30	20	62				
RSTP	188					188				0			188				
Totals	300			20	30	250				0	30	20	250				

Comments \$188k RSTPX approved by RTC 2/7/13. Formerly RTP SC-P34 (which includes extended Frederick St bike lane to Broadway and sharrows/traffic calming from Broadway to park). 3/14-update description to include extended bicycle lane on Frederick.

Proj No: SC 45

Soquel/Park Way Intersection Safety Improvements

Location

Const Sched: 10/13

Est. End: 5/14

PPNO: 2364

Install protected left turn lanes and signal. Includes removal and replacement of 2 retaining walls, improved transit stops, bike lanes, pedestrian push buttons and access ramps.

Soquel Ave at Park Way

<i>Fund Source</i>	<i>Total/source</i>	<i>Obl Ttl</i>	<i>Envl</i>	<i>Design</i>	<i>ROW</i>	<i>Const</i>	<i>Other</i>	<i>ROWSup</i>	<i>Const Sup</i>	<i>PriorYrs</i>	<i>12/13</i>	<i>13/14</i>	<i>14/15</i>	<i>15/16</i>	<i>16/17</i>	<i>17/18</i>	<i>18/19</i>
HSIP	255					255				0	255						
Local	371					371				0	371						
STIP	450	450				450				0	450						
Totals	1,076	450				1,076				0	1,076						

Comments Contract award - 10/13. 12/1/11 - RTC approved \$450k STIP, approved by CTC 3/29/12; allocated by CTC 6/11/13 as fed funds. CT approved \$255K HSIP 10/12. Construction to be sequential to Highway Soquel-Morrissey Aux Lanes project (expected to take est. 4 months from groundbreaking).

Proj No: SC 46

Branciforte Creek Bike/Ped Crossing

Location

Const Sched: 3/15

Est. End: 11/15

PPNO:

Install a Class 1 bicycle/pedestrian bridge over Branciforte Creek and multi-use paths connecting the levee paths in the vicinity of San Lorenzo Park and Soquel Avenue

The east bank of the San Lorenzo River Pathway between Soquel Avenue and San Lorenzo Park.

<i>Fund Source</i>	<i>Total/source</i>	<i>Obl Ttl</i>	<i>Envl</i>	<i>Design</i>	<i>ROW</i>	<i>Const</i>	<i>Other</i>	<i>ROWSup</i>	<i>Const Sup</i>	<i>PriorYrs</i>	<i>12/13</i>	<i>13/14</i>	<i>14/15</i>	<i>15/16</i>	<i>16/17</i>	<i>17/18</i>	<i>18/19</i>
Add'l Need	2,140					2,140				0			2,140				
Local	226			200	26					0	200	26					
RSTPX	300	300		300						0	300						
TDA	75		75							75							
Totals	2,741	300	75	500	26	2,140				75	500	26	2,140				

Comments \$300k RSTPX approved by RTC 2/7/13. Formerly RTP SC-P34. Additional \$1.75M needed.

Proj No: SC 47

Laurel St Pavement Rehabilitation: Front St to Mission St

Location

Const Sched: 7/14

Est. End: 9/14

PPNO:

Rehab roadway, possibly with cold-in-place recycling method, new access ramps and sidewalk repairs (excluding recent improvement between Felix and Blackburn).

Laurel St: Front St to Mission St (.94mi)

<i>Fund Source</i>	<i>Total/source</i>	<i>Obl Ttl</i>	<i>Envl</i>	<i>Design</i>	<i>ROW</i>	<i>Const</i>	<i>Other</i>	<i>ROWSup</i>	<i>Const Sup</i>	<i>PriorYrs</i>	<i>12/13</i>	<i>13/14</i>	<i>14/15</i>	<i>15/16</i>	<i>16/17</i>	<i>17/18</i>	<i>18/19</i>
Local	525			60		465				0	525						
RSTPX	675	675				675				0	675						
Totals	1,200	675		60		1,140				0	1,200						

Comments \$675k RSTPX approved by RTC 2/7/13.

Proj No: SC 48

Ocean St Pavement Rehabilitation (and Felker St)

Location

Const Sched: 3/15

Est. End: 6/15

PPNO: Pavement rehabilitation using cold-in-place recycling process; includes new curb ramps, restriping of bicycle lanes and crosswalks. Ocean St (Water to Hwy 17/Plymouth) & Felker St (Ocean SLR Bike/Ped Bridge) (0.7 miles)

Fund Source	Total/source	Obl Ttl	Envl	Design	ROW	Const	Other	ROWSup	Const Sup	PriorYrs	12/13	13/14	14/15	15/16	16/17	17/18	18/19
Local	610					610				0			610				
RSTP	390					390				0			390				
Totals	1,000					1,000				0			1,000				

Comments 2014 RTIP: \$390k RSTP approved by RTC 12/5/13. To be coordinated with Ocean St beautification project.

Proj No: TRL 07SC

Rail Trail: Segment 7 (Natural Bridges to Pacific Ave)

Location

Const Sched: 9/16

Est. End: 9/17

PPNO: 2551 2.4 miles of Monterey Bay Sanctuary Scenic Trail Network (MBSST) Segment 7 (excluding Moore Creek rail trestle bridge and trail to Natural Bridges Drive) along rail line. One water crossing at Neary Lagoon (not a bridge), one rail crossing near Rankin Street and two at the Neary Lagoon "Y". Retaining structures adjacent to the Wastewater Treatment Facility and fifteen street crossings. Santa Cruz Branch Rail Line - Natural Bridges Dr. to Pacific Ave (2.4 mi)

Fund Source	Total/source	Obl Ttl	Envl	Design	ROW	Const	Other	ROWSup	Const Sup	PriorYrs	12/13	13/14	14/15	15/16	16/17	17/18	18/19
Earmark	3,255		240	400		2,615				0		240	400		2,615		
Local	1,240		60	100		1,080				0		60	100		1,080		
STIP	805					805				0					805		
Totals	5,300		300	500		4,500				0		300	500		4,500		

Comments 2014 RTIP: \$3.255M Earmark and \$805K STIP reprogrammed from RTC27 by RTC 12/5/13. "Local" includes \$150k pledged by private donors, city funds make up balance.

City of Scotts Valley

Proj No: SV 25

Vine Hill Elementary School Bike Lanes and Sidewalks

Location

Const Sched: 5/14

Est. End: 9/14

PPNO: 2365 Add sidewalk, curb/gutter, bike lanes, 6' pavement widening, ADA-Accessible Ramps, and retaining walls on Vine Hill School Road and Tabor Drive. North side of Vine Hill School Road and both sides of Tabor Drive, along the Vine Hill Elementary School's frontage property.

Fund Source	Total/source	Obl Ttl	Envl	Design	ROW	Const	Other	ROWSup	Const Sup	PriorYrs	12/13	13/14	14/15	15/16	16/17	17/18	18/19
Local	100		25	5		70				25	5	70					
STIP (SOF)	400	400				400				0		400					
Totals	500	400	25	5		470				25	5	470					

Comments 12/1/11 - \$400k STIP approved by RTC, approved by CTC 3/29/12. CTC allocated as state STIP funds (rather than STIP TE) 3/20/14.

Proj No: SV 27

Mt. Hermon Rd/Scotts Valley Dr/Whispering Pines Dr Intersection Operations Improvement Project

Location

Const Sched: 5/15

Est. End: 10/15

PPNO:

Add a left turn lane from northbound Mt. Hermon Rd. to eastbound Whispering Pines Dr, modify existing signal, construct curb, gutter, sidewalk and curb ramps, modify striping and pavement markings, resynchronize intersection timing, and repave intersection area.

Mt. Hermon Rd/Scotts Valley Dr/Whispering Pines Dr Intersection

Fund Source	Total/source	Obl Til	Envl	Design	ROW	Const	Other	ROWSup	Const Sup	PriorYrs	12/13	13/14	14/15	15/16	16/17	17/18	18/19
Local	88		5	15		68				0		5	83				
RSTP	346					346				0			346				
Totals	434		5	15		414				0		5	429				

Comments 2014 RTIP: RTC approved \$346k RSTP 12/5/13. Formerly RTP#SV-P43

City of Watsonville

Proj No: TRL 18L

MBSST Rail Trail: Lee Road, 4000 feet east to City Slough Trail connection

Location

Const Sched: 7/15

Est. End: 11/15

PPNO: 2552

Construction of 4000-foot long pathway parallel to the railroad tracks: eight-foot width asphalt (hma) and two-foot base rock shoulders on each side. A 500 foot long retaining wall up to three foot tall with fence will be needed near Lee Road. A four foot by six foot railroad building at the Ohlone Parkway will need to be relocated. A drainage structure east of Ohlone Parkway will need to be modified. Connection to Lee Road shall require installation of pathway or sidewalk to link to the existing sidewalk. At grade crossing at Ohlone Parkway and at a spur line located between Lee Road and Highway 1.

Santa Cruz Branch Rail Line - Lee Road, 4000 feet east to City Slough Trail connection, Watsonville

Fund Source	Total/source	Obl Til	Envl	Design	ROW	Const	Other	ROWSup	Const Sup	PriorYrs	12/13	13/14	14/15	15/16	16/17	17/18	18/19
Land Trust	260		50		10	200				0		50	10	200			
STIP	1,040			90		950				0			90	950			
Totals	1,300		50	90	10	1,150				0		50	100	1,150			

Comments 2014 RTIP: \$1,040,000 STIP reprogrammed from RTC27 by RTC 12/5/13. \$260k matching from Land Trust of Santa Cruz County.

Proj No: WAT 01

Hwy 1/ Harkins Slough Road Interchange

Location

Const Sched: 10/16

Est. End: 10/18

PPNO: 413

Reconstruct current half interchange to add on and off ramps to the northern side of the interchange in order to relieve congestion at Main Street (Hwy 152)/Green Valley Road intersection. Widen bridge, add bike lanes and sidewalks. (Caltrans Project ID - EA05-44130).

Harkins Slough Rd and Green Valley Rd corridor from Hwy 1/Harkins Slough Rd I/C to Hwy 152/Main St/Green Valley Rd intersection.

<i>Fund Source</i>	<i>Total/source</i>	<i>Obl Ttl</i>	<i>Envl</i>	<i>Design</i>	<i>ROW</i>	<i>Const</i>	<i>Other</i>	<i>ROWSup</i>	<i>Const Sup</i>	<i>PriorYrs</i>	<i>12/13</i>	<i>13/14</i>	<i>14/15</i>	<i>15/16</i>	<i>16/17</i>	<i>17/18</i>	<i>18/19</i>
Local	2,523		285	1,140	243	855				0			285	1,140	243	855	
STIP	7,340				462	6,878				0					462	6,878	
Totals	9,863		285	1,140	705	7,733				0			285	1,140	705	7,733	

Comments 2014 RTIP: RTC shift funds to later years 12/5/13, 3/6/14 & 4/3/14. Potential scope change to be considered once new PID complete (signal modifications, traffic, bicycle and pedestrian improvements to relieve congestion at Main St/Hwy 152 and Green Valley Road intersection and along Harkins Slough Rd/Green Valley Rd corridor). 3/21/13: RTC shifted ROW to FY15, CONS to FY16; approved by CTC 6/11/13. 3/12: Funds shifted to later years; updated traffic study under review. 6/11: Project need/purpose being reviewed by CT/City. Cost may change dependent on final scope. 3/3/11: RTC shifted ROW to FY12/13. 1/10 RTIP: Project delayed, ROW shifted to FY11/12; CON to FY14/15. Cost & schedule to be reevaluated upon completion of traffic study & updated PSR in FY09/10. No major activity on project since 2001. Past Actions: \$5.6M STIP approved by RTC 3/5/98 and 5/7/98. RTC removed restrictions on scope 1/00. \$330k RSTP approved 6/5/97 for rehab was reprogrammed as separate project (WAT 29) 5/00. 2006 STIP added \$330K for ROW and \$1375 for construction; shifted ROW to FY08/09 and const to FY10/11 and project scope refined. 2/7/08 RTC changed lead agency from CT to Watsonville, shifted funds out two years to 12/13 - approved by CTC 5/29/08. Prev RTP#CT18.

Proj No: WAT 38

Airport Blvd Improvements (Freedom Blvd to City Limits)

Location

Const Sched: 8/15

Est. End: 11/15

PPNO: 2366

Road widening to accommodate extension of bicycle lane and portion of travel lane, installation of bus pull out, new sidewalks and curb ramps, refuge island, rectangular flashing beacan, striping, and roadway rehab.

Airport Blvd from Freedom Boulevard to City limits

<i>Fund Source</i>	<i>Total/source</i>	<i>Obl Ttl</i>	<i>Envl</i>	<i>Design</i>	<i>ROW</i>	<i>Const</i>	<i>Other</i>	<i>ROWSup</i>	<i>Const Sup</i>	<i>PriorYrs</i>	<i>12/13</i>	<i>13/14</i>	<i>14/15</i>	<i>15/16</i>	<i>16/17</i>	<i>17/18</i>	<i>18/19</i>
HSIP	338		3	14	7	314				0		3	21	314			
Local	98		7	36	18	37				0		7	54	37			
STIP	850					850				0				850			
Totals	1,286		10	50	25	1,201				0		10	75	1,201			

Comments 12/1/11 RTC approved \$850k STIP, approved by CTC 3/29/12. \$338k HSIP secured in 2013, 4/3/14 shift STIP to FY15/16 and update cost to match HSIP. 5/12 shifted funds to later years to match CTC adopted STIP. Previously RTP#WAT-P28.

Proj No: WAT 39

Freedom Blvd Reconstruction (Broadis St to Alta Vista Ave)

Location

Const Sched: Spring 15

Est. End: 12/15

PPNO:

Full depth rehab (reuse existing materials), relocate utilities, concrete pads at bus stop, signage and striping, ADA upgrades to curbs and driveways. Evaluate and if feasible, install bike treatments (such as buffered and/or painted bike lanes, bike boxes, bike signals) to address speed inconsistency between bicyclists and vehicles. Complete sidewalks, including pedestrian buffer, and pedestrian islands at crossings.

Freedom Boulevard from Broadis Street to Alta Vista Avenue (0.8mi)

<i>Fund Source</i>	<i>Total/source</i>	<i>Obl Ttl</i>	<i>Envl</i>	<i>Design</i>	<i>ROW</i>	<i>Const</i>	<i>Other</i>	<i>ROWSup</i>	<i>Const Sup</i>	<i>PriorYrs</i>	<i>12/13</i>	<i>13/14</i>	<i>14/15</i>	<i>15/16</i>	<i>16/17</i>	<i>17/18</i>	<i>18/19</i>
Local	1,500		3	80	2	1,415				0	5	10	162	1,323			
RSTPX	900	900				900				0			900				
Totals	2,400	900	3	80	2	2,315				0	5	10	1,062	1,323			

Comments 2014 RTIP: Shift construction funds to FY15 to reflect updated schedule. \$900K RSTPX approved by RTC 2/7/13. Previously RTP#WAT-P01. 5/14 City may modify local match from \$1.5M to \$500k and request to reduce scope.

Proj No: WAT 40

Airport Boulevard Improvements: Westgate/Larkin to Hanger Way

Location

Const Sched: 6/15

Est. End: 10/15

PPNO: 2555

Reconstruct roadway, install new sidewalk, upgrade curb ramps and driveway crossings, install median islands, modify traffic signals to include add'l ped crossing and install rectangular rapid flashing beacon at crosswalk.

Airport Boulevard:1200 feet east of Westgate Drive/Larkin Valley Road near Hwy 1 to east of Hanger Way

<i>Fund Source</i>	<i>Total/source</i>	<i>Obl Ttl</i>	<i>Envl</i>	<i>Design</i>	<i>ROW</i>	<i>Const</i>	<i>Other</i>	<i>ROWSup</i>	<i>Const Sup</i>	<i>PriorYrs</i>	<i>12/13</i>	<i>13/14</i>	<i>14/15</i>	<i>15/16</i>	<i>16/17</i>	<i>17/18</i>	<i>18/19</i>
Local	305		5	50		250				0			55		250		
STIP	1,195					1,195				0					1,195		
Totals	1,500		5	50		1,445				0			55		1,445		

Comments 2014 RTIP: \$1,195,000 STIP approved by RTC 12/5/13; shift to FY16/17 4/3/14.

Proj No: WAT 41

Sidewalk Infill Harkins Slough Road and Main Street

Location

Const Sched: 9/15

Est. End: 10/15

PPNO: 2556

Harkins Slough: 6 ft wide x 180 ft long sidewalks on south side of Harkins Slough Rd and east of Ohlone Pkwy; Main St: 6 ft wide x 450 ft long sidewalks on north side of Main St from Pennsylvania Dr-Pacifica Blvd

Harkins Slough Road: east of Ohlone Parkway; and Main Street: Pennsylvania Dr-Pacifica Blvd

<i>Fund Source</i>	<i>Total/source</i>	<i>Obl Ttl</i>	<i>Envl</i>	<i>Design</i>	<i>ROW</i>	<i>Const</i>	<i>Other</i>	<i>ROWSup</i>	<i>Const Sup</i>	<i>PriorYrs</i>	<i>12/13</i>	<i>13/14</i>	<i>14/15</i>	<i>15/16</i>	<i>16/17</i>	<i>17/18</i>	<i>18/19</i>
Local	80		10	24	10	36				0		10	34	36			
STIP	120					120				0				120			
Totals	200		10	24	10	156				0		10	34	156			

Comments 2014 RTIP: \$120k STIP approved by RTC 12/5/13.

County Health Services Agency

Proj No: VAR 01

Santa Cruz County Open Streets

Location

Const Sched: 5/14

Est. End: 7/15

PPNO:

Community events promoting alternatives to driving alone as part of a sustainable, healthy, and active life-style. Temporarily opens roadways to bicycle and pedestrian travel only, diverting automobiles to other roadways. (Average annual cost - \$100k/yr)

Countywide

<i>Fund Source</i>	<i>Total/source</i>	<i>Obl Ttl</i>	<i>Envl</i>	<i>Design</i>	<i>ROW</i>	<i>Const</i>	<i>Other</i>	<i>ROWSup</i>	<i>Const Sup</i>	<i>PriorYrs</i>	<i>12/13</i>	<i>13/14</i>	<i>14/15</i>	<i>15/16</i>	<i>16/17</i>	<i>17/18</i>	<i>18/19</i>
Local	62						62			0		62					
RSTPX	50	50					50			0		50					
Totals	112	50					112			0		112					

Comments \$50k RSTPX approved by RTC 2/7/13 for events in Watsonville and Capitola. County HSA is public sponsor, SC Open Streets to implement. Formerly RTP#VAR-P26.

County of Santa Cruz

Proj No: CO 36

State Park Drive/Seacliff Village Improvements

Location

Const Sched: Spring 2015

Est. End: Fall 2015

PPNO: 1870

Bike lanes, sidewalks, and bus turnouts on St. Park Dr, sidewalks and roadway rehab in Seacliff core area- consistent with the Seacliff Village Plan adopted by the BOS in 2003.

State Park Drive (Sea Ridge Rd to Santa Cruz Ave) and Santa Cruz Ave- Broadway- Center Ave loop.

<i>Fund Source</i>	<i>Total/source</i>	<i>Obl Ttl</i>	<i>Envl</i>	<i>Design</i>	<i>ROW</i>	<i>Const</i>	<i>Other</i>	<i>ROWSup</i>	<i>Const Sup</i>	<i>PriorYrs</i>	<i>12/13</i>	<i>13/14</i>	<i>14/15</i>	<i>15/16</i>	<i>16/17</i>	<i>17/18</i>	<i>18/19</i>
Add'l Need	570					570				0		570					
County	1,000		5	40	5	950				50		950					
RSTPX	587	587				587				0		587					
TDA	263					263				0		263					
Totals	2,420	587	5	40	5	2,370				50		2,370					

Comments 2014 RTIP: Update schedule, shift construction funds to FY14/15. Delayed obtaining St. Park ROW and utility undergrounding. 10/1/09 Add'l \$75,530 TDA approved. 6/18/09 \$460k RSTPX approved. Extra \$50k may be available from sewer. 2/7/08 Deobligated \$310k RSTPX to allow exchange for GH Rd (CO 02), shifted construction to FY09/10. RTC approved \$437k RSTP 5/4/00, exchanged 9/04. Approved \$100k TDA for Bike/Ped Improv 11/04. Proposed 2006 RTIP added \$325K in STIP -NOT approved by CTC. 1/07 RTC approved \$87.4k TDA. 4/07 RTC approved \$150k RSTP funds.

Proj No: CO 61

Davenport Resurfacing

Location

Const Sched: Summer 2014 **Est. End:** Summer 2014

PPNO:

Roadway repairs/fiberized and double fiberized slurry seals to roadways in Davenport area.

1st St & 3rd St (east end to Cement Plant Rd); Center St (Marine View Ave to w. end); Church St; Davenport Ave & Ocean St (Hwy 1 to Marine Ave); Fair Ave (Coast Rd to w end); Marine View Ave; San Vicente Ave

Fund Source	Total/source	Obl Ttl	Envl	Design	ROW	Const	Other	ROWSup	Const Sup	PriorYrs	12/13	13/14	14/15	15/16	16/17	17/18	18/19
Local	98			6		92				0		98					
RSTP	174					174				0			174				
RSTPX	45	45				45				0		45					
Totals	317	45		6		311				0		143	174				

Comments 4/3/14: RTC added \$173,933 cost savings from CO55 and modified description from "cape seal" to "fiberized and double fiberized slurry seals". 10/13: Updated local shares, additional \$105k maybe needed.10/7/10 \$44,889 RSTPX cost savings shifted from Bonny Doon Area Rehab project (CO 45).

Proj No: CO 62

Nelson Rd PM 2.0 Storm Damage Repair

Location

Const Sched: Smr14

Est. End: Fall14

PPNO: 2367

Build permanent bypass around 350 ft. debris that closed road in 2010.

Nelson Rd at PM 2.0

Fund Source	Total/source	Obl Ttl	Envl	Design	ROW	Const	Other	ROWSup	Const Sup	PriorYrs	12/13	13/14	14/15	15/16	16/17	17/18	18/19
Local	220		10	170	40					0	10	170	40				
STIP (Reserves)	339				244	95				0			339				
STIP (SOF)	850					850				0			850				
Totals	1,409		10	170	284	945				0	10	170	1,229				

Comments 12/1/11: RTC approved \$1,189,000 STIP, approved by CTC 3/29/12. 2014 STIP: designated as state-only funds (SOF). 4/3/14: RTC amended project to update description to show building permanent bypass, not reopening roadway through debris. \$850k STIP CON allocation request submitted for May/June 2014 CTC meeting, ROW STIP not needed/done with county funds and bypass to cost less. If cost ends up higher than allocated STIP amount, County to seek supplemental allocation from CTC or ask RTC to change color of some unallocated funds from STIP to RSTP. County expects to award contract on 6/24/14.

Proj No: CO 63

Redwood Lodge Rd PM 1.65 Storm Damage Repair

Location

Const Sched: Spring15

Est. End: Fall15

PPNO: 2368

Repair 80 ft. slipout/slump to reopen roadway to traffic.

Redwood Lodge Rd PM 1.65

Fund Source	Total/source	Obl Ttl	Envl	Design	ROW	Const	Other	ROWSup	Const Sup	PriorYrs	12/13	13/14	14/15	15/16	16/17	17/18	18/19
Local	150		16	93	9	32				0	16	102	32				
STIP (SOF)	850					850				0			850				
Totals	1,000		16	93	9	882				0	16	102	882				

Comments 12/1/11 - RTC approved \$850k STIP, approved by CTC 3/29/12. 2014 STIP: designated as state-only funds (SOF).

Proj No: CO 64

Aptos Village Plan Improvements

Location

Const Sched: Fall 2014

Est. End: Fall 2015

PPNO:

Modifications to ped, bike, and auto traffic. Add pedestrian facilities on both sides of Soquel Dr; maintain existing bike lanes; new bus pullout and shelter on north side. Trout Gulch: Replace sidewalks with standard sidewalks on east side, ADA upgrades to west side sidewalks. Install traffic signals at Soquel Dr/Aptos Creek Rd & Soq/Trout Gulch. RR crossing modifications - new crossing arms, concrete panels for vehicle and pedestrian crossings. New RR xing at Parade St. Phase 1: Trout Gulch Rd improvements w/traffic signal and upgraded RR xg at Soquel Dr.

Soquel from 350 ft west of Aptos Creek Rd to 150 ft east of Trout Gulch Rd (1230 ft); Trout Gulch from Soquel to Valencia St (390 ft)

<i>Fund Source</i>	<i>Total/source</i>	<i>Obl Ttl</i>	<i>Envl</i>	<i>Design</i>	<i>ROW</i>	<i>Const</i>	<i>Other</i>	<i>ROWSup</i>	<i>Const Sup</i>	<i>PriorYrs</i>	<i>12/13</i>	<i>13/14</i>	<i>14/15</i>	<i>15/16</i>	<i>16/17</i>	<i>17/18</i>	<i>18/19</i>
DevFees	1,575					1,575				0		1,575					
Local	1,112			40	20	1,052				0	60	1,052					
RSTPX	690	690				690				0		690					
Totals	3,377	690		40	20	3,317				0	60	3,317					

Comments \$690k RSTPX approved by RTC 2/7/13. 10/14: Update schedule, awaiting PUC approval for Aptos Creek and Parade St crossings. Construction phased due to PUC process.

Proj No: CO 65

17th Ave Cape Seal (Brommer to East Cliff)

Location

Const Sched: Summer 2015

Est. End: Summer 2015

PPNO:

Pavement maintenance, isolated section digout and asphalt replacement and cape seal on entire roadway.

17th Ave: Brommer to East Cliff (0.62mi)

<i>Fund Source</i>	<i>Total/source</i>	<i>Obl Ttl</i>	<i>Envl</i>	<i>Design</i>	<i>ROW</i>	<i>Const</i>	<i>Other</i>	<i>ROWSup</i>	<i>Const Sup</i>	<i>PriorYrs</i>	<i>12/13</i>	<i>13/14</i>	<i>14/15</i>	<i>15/16</i>	<i>16/17</i>	<i>17/18</i>	<i>18/19</i>
Local	122			54		68				0		54	68				
RSTP	241					241				0		241					
Totals	363			54		309				0		54	309				

Comments 10/13: Updated local shares. \$241k RSTP approved by RTC 2/7/13. 3/14: Project postponed from Smr 2014 to 2015 due to sanitation project.

Proj No: CO 66

East Cliff Drive Cape Seal (12th-17th)

Location

Const Sched: Summer 2015

Est. End: Summer 2015

PPNO:

Pavement maintenance, isolated section digout and asphalt replacement and cape seal on entire roadway.

East Cliff Drive: 12th-17th (0.35mi)

<i>Fund Source</i>	<i>Total/source</i>	<i>Obl Ttl</i>	<i>Envl</i>	<i>Design</i>	<i>ROW</i>	<i>Const</i>	<i>Other</i>	<i>ROWSup</i>	<i>Const Sup</i>	<i>PriorYrs</i>	<i>12/13</i>	<i>13/14</i>	<i>14/15</i>	<i>15/16</i>	<i>16/17</i>	<i>17/18</i>	<i>18/19</i>
Local	75			33		42				0		33	42				
RSTP	147					147				0		147					
Totals	222			33		189				0		33	189				

Comments 10/13: Updated local shares. \$147k RSTP approved by RTC 2/7/13. 3/14: Project postponed from Smr 2014 to 2015 due to sanitation project.

Proj No: CO 67 **Empire Grade 2-Layer Seal (SC city limits to 130' N of Heller Dr)** **Location** *Const Sched: Summer 2014* *Est. End: Summer 2014*

PPNO: Pavement maintenance, isolated section digout and asphalt replacement and 2-layer seal on entire roadway. Empire Grade: City of SC limits to 130' N of Heller Drive (0.71mi)

<i>Fund Source</i>	<i>Total/source</i>	<i>Obl Ttl</i>	<i>Envl</i>	<i>Design</i>	<i>ROW</i>	<i>Const</i>	<i>Other</i>	<i>ROWSup</i>	<i>Const Sup</i>	<i>PriorYrs</i>	<i>12/13</i>	<i>13/14</i>	<i>14/15</i>	<i>15/16</i>	<i>16/17</i>	<i>17/18</i>	<i>18/19</i>
Local	122			8		114				0		8	114				
RSTPX	218	218				218				0			218				
Totals	340	218		8		332				0		8	332				

Comments 10/13: Updated local shares. \$218k RSTP approved by RTC 2/7/13, exchanged for RSTPX 3/6/14. 4/3/14: RTC amended project to change from "chip/cape seal" to "2-layer seal".

Proj No: CO 67B **Empire Grade 2-layer Seal (130' north of Heller Dr to 0.79 mi north of Heller)** **Location** *Const Sched: Summer14* *Est. End: Summer 14*

PPNO: Asphalt digout, 2-layer seal, and restriping to rehabilitate the roadway surface. Empire Grade Rd: 130' north of Heller Dr to 0.79 mi north of Heller, near UCSC entrance

<i>Fund Source</i>	<i>Total/source</i>	<i>Obl Ttl</i>	<i>Envl</i>	<i>Design</i>	<i>ROW</i>	<i>Const</i>	<i>Other</i>	<i>ROWSup</i>	<i>Const Sup</i>	<i>PriorYrs</i>	<i>12/13</i>	<i>13/14</i>	<i>14/15</i>	<i>15/16</i>	<i>16/17</i>	<i>17/18</i>	<i>18/19</i>
Local	33			5		28				0		5	28				
RSTPX	187	187				187				0			187				
Totals	220	187		5		215				0		5	215				

Comments 2014 RTIP: \$187k RSTP approved by RTC 12/5/13, exchanged for RSTPX 3/6/14. 4/3/14: RTC amended project to change from "chip seal" to "2-layer seal" and shift \$28K RSTP from design to construction.

Proj No: CO 68 **Green Valley Rd 3-Layer Seal: Devon Ln to Melody Ln (0.58 mi)** **Location** *Const Sched: 7/14* *Est. End: 10/14*

PPNO: Pavement maintenance, isolated section digout and asphalt replacement and 3-layer seal on entire roadway. Green Valley Rd: Devon Ln to Melody Ln (0.58 mi)

<i>Fund Source</i>	<i>Total/source</i>	<i>Obl Ttl</i>	<i>Envl</i>	<i>Design</i>	<i>ROW</i>	<i>Const</i>	<i>Other</i>	<i>ROWSup</i>	<i>Const Sup</i>	<i>PriorYrs</i>	<i>12/13</i>	<i>13/14</i>	<i>14/15</i>	<i>15/16</i>	<i>16/17</i>	<i>17/18</i>	<i>18/19</i>
Local	95			6		89				0		6	89				
RSTPX	173	173				173				0			173				
Totals	268	173		6		262				0		6	262				

Comments 10/13: Updated local shares. \$173k RSTP approved by RTC 2/7/13, exchanged for RSTPX 3/6/14. 4/3/14: RTC amended to modify title and description to change from "chip seal" to "3-layer seal".

Proj No: CO 69

Mt. Hermon Rd Pavement Preservation: Graham Hill to 1000' N of Locatelli Ln

Location

Const Sched: Summer 2014 Est. End: Summer 2014

PPNO: Pavement maintenance, isolated section digout and asphalt replacement and 3-layer seal.

Mt. Hermon Rd: Graham Hill to 1000' N of Locatelli Ln (1.34mi)

Fund Source	Total/source	Obl Ttl	Envl	Design	ROW	Const	Other	ROWSup	Const Sup	PriorYrs	12/13	13/14	14/15	15/16	16/17	17/18	18/19
Local	77			14		181				0		51	26				
RSTPX	780	780				780				0			780				
Totals	857	780		14		961				0		51	806				

Comments 4/6/14 RTIP amended to modify scope from "cape seal" to "3-layer seal" and combine with CO75 (duplicate project). 2014 RTIP: \$225k RSTP approved by RTC 12/5/13 as CO75, exchanged for RSTPX 3/6/14. \$555k RSTP approved by RTC 2/7/13, exchanged for RSTPX 3/6/14. Updated local share 10/13; reduced 3/14 based on updated cost estimates --- needs to increase local share to 11.47%.

Proj No: CO 70

Porter Street Overlay: Capitola Limits to 288' N/O Soquel Dr

Location

Const Sched: Summer 2014 Est. End: Summer 2014

PPNO: Pavement maintenance, edge grinding, isolated section digout and asphalt replacement and 2" overlay on entire roadway.

Porter Street Overlay: City of Capitola Limits to 288' N/O Soquel Dr (0.34mi)

Fund Source	Total/source	Obl Ttl	Envl	Design	ROW	Const	Other	ROWSup	Const Sup	PriorYrs	12/13	13/14	14/15	15/16	16/17	17/18	18/19
Local	238			10		228				0		10	228				
RSTPX	227	227				227				0			227				
Totals	465	227		10		455				0		10	455				

Comments \$227k RSTP approved by RTC 2/7/13, exchanged for RSTPX 3/6/14. Updated local share 10/13 and 2/14.

Proj No: CO 71

Bear Creek Rd Surface Seal (PM 4.75-PM 7.0)

Location

Const Sched: Smr14 Est. End: Smr14

PPNO: 3-layer slurry seal and restriping to rehabilitate the roadway surface.

Bear Creek Rd: PM 4.75-PM 7.0 (2.25mi)

Fund Source	Total/source	Obl Ttl	Envl	Design	ROW	Const	Other	ROWSup	Const Sup	PriorYrs	12/13	13/14	14/15	15/16	16/17	17/18	18/19
Local	357			14		343				0		14	343				
RSTP	61					61				0			61				
RSTPX	432	432				432				0			432				
Totals	850	432		14		836				0		14	836				

Comments 2014 RTIP: \$432k RSTP approved by RTC 12/5/13, exchanged for RSTPX 3/6/14. 4/3/14: RTC added \$60,738 RSTP cost savings from CO55 and modified description from "chip seal" to "surface seal".

Proj No: CO 72

Capitola Road Slurry Seal (30th-17th Ave)

Location

Const Sched: Smr14

Est. End: Smr14

PPNO:

Double fiberized slurry seal and restriping to rehabilitate the roadway surface.

Capitola Road: 30th-17th Ave (0.58mi)

<i>Fund Source</i>	<i>Total/source</i>	<i>Obl Ttl</i>	<i>Envl</i>	<i>Design</i>	<i>ROW</i>	<i>Const</i>	<i>Other</i>	<i>ROWSup</i>	<i>Const Sup</i>	<i>PriorYrs</i>	<i>12/13</i>	<i>13/14</i>	<i>14/15</i>	<i>15/16</i>	<i>16/17</i>	<i>17/18</i>	<i>18/19</i>
Local	105			9		96				0		9	96				
RSTPX	289	289				289				0		43	246				
Totals	394	289		9		385				0		52	342				

Comments 2014 RTIP: \$289k RSTP approved by RTC 12/5/13, exchanged for RSTPX 3/6/14. 4/3/14: RTC amended project to shift \$34k RSTPX from Design to Construction; increase total local match to \$105k; modify title and description to change from "asphalt digout, cape seal" to "double fiberized slurry seal" (budget amendment).

Proj No: CO 73

Cassery Rd Bridge Replacement

Location

Const Sched: 4/17

Est. End: 10/17

PPNO: 2557

Replace existing bridge in poor condition over a tributary of Green Valley Creek near Smith Rd intersection

Cassery Road Green Valley Creek near Smith Rd intersection (approx 300ft)

<i>Fund Source</i>	<i>Total/source</i>	<i>Obl Ttl</i>	<i>Envl</i>	<i>Design</i>	<i>ROW</i>	<i>Const</i>	<i>Other</i>	<i>ROWSup</i>	<i>Const Sup</i>	<i>PriorYrs</i>	<i>12/13</i>	<i>13/14</i>	<i>14/15</i>	<i>15/16</i>	<i>16/17</i>	<i>17/18</i>	<i>18/19</i>
Local	778		50	75	25	628				0		50		100	628		
STIP	125					125				0					125		
Totals	903		50	75	25	753				0		50		100	753		

Comments 2014 RTIP: \$125k STIP approved by RTC 12/5/13.

Proj No: CO 74

Freedom Blvd Cape Seal (Hwy 1 to Pleasant Vly Rd)

Location

Const Sched: Smr15

Est. End: Smr15

PPNO: 2558

Asphalt Digout, Cape Seal, and restriping to rehabilitate the roadway surface.

Freedom Blvd: Hwy 1 to Pleasant Vly Rd (3.53mi)

<i>Fund Source</i>	<i>Total/source</i>	<i>Obl Ttl</i>	<i>Envl</i>	<i>Design</i>	<i>ROW</i>	<i>Const</i>	<i>Other</i>	<i>ROWSup</i>	<i>Const Sup</i>	<i>PriorYrs</i>	<i>12/13</i>	<i>13/14</i>	<i>14/15</i>	<i>15/16</i>	<i>16/17</i>	<i>17/18</i>	<i>18/19</i>
Local	584			208		376				0		208		376			
STIP	800					800				0				800			
Totals	1,384			208		1,176				0		208		1,176			

Comments 2014 RTIP: \$800k STIP approved by RTC 12/5/13 for FY14/15. CTC shifted to FY15/16.

Proj No: CO 76

Portola Dr Cape Seal (E. Cliff to 24th Ave)

Location

Const Sched: Smr14

Est. End: Smr14

PPNO:

Double fiberized slurry seal and restriping to rehabilitate the roadway surface.

Portola Dr: E. Cliff Dr. to 24th Ave (0.45mi)

<i>Fund Source</i>	<i>Total/source</i>	<i>Obl Ttl</i>	<i>Envl</i>	<i>Design</i>	<i>ROW</i>	<i>Const</i>	<i>Other</i>	<i>ROWSup</i>	<i>Const Sup</i>	<i>PriorYrs</i>	<i>12/13</i>	<i>13/14</i>	<i>14/15</i>	<i>15/16</i>	<i>16/17</i>	<i>17/18</i>	<i>18/19</i>
Local	30			4		26				0		4	26				
RSTP	200					200				0		27	173				
Totals	230			4		226				0		31	199				

Comments 2014 RTIP: \$200k RSTP approved by RTC 12/5/13. 4/3/14: RTC amended to shift \$27k RSTP from Design to Construction; modify title and description to change from "Asphalt digout, cape seal" to "double fiberized slurry seal."

Proj No: CO 78

Summit Rd Chip Seal (Soquel-San Jose Rd-Old SC Hwy)

Location

Const Sched: Smr14

Est. End: Smr14

PPNO:

Asphalt Digout, Chip Seal, and restriping to rehabilitate the roadway surface.

Summit Rd (Soquel-San Jose Rd-Old SC Hwy)

Fund Source	Total/source	Obl Ttl	Envl	Design	ROW	Const	Other	ROWSup	Const Sup	PriorYrs	12/13	13/14	14/15	15/16	16/17	17/18	18/19
Local	80			12		68				0		12	68				
RSTPX	450	450				450				0		62	388				
Totals	530	450		12		518				0		74	456				

Comments 2014 RTIP: \$450k STIP approved by RTC 12/5/13. 4/3/14: RTC amended to shift \$62k RSTPX from Design to Construction.

Proj No: TRL 9bCO

Twin Lakes Beachfront (5th Ave to 7th Ave)

Location

Const Sched: Fall 15

Est. End: 10/16

PPNO:

Segment 9B of MBSST. Includes partial reconstruction of two 12' car lanes, two 5' bike lanes, universal pedestrain walkways, circular stop sign controlled three-way intersection at lower harbor entrance, 3"AC over 9"AB slurry seal, parking. Part of larger Twin Lakes Beachfront project.

East Cliff Dr: 5th Ave to 7th Ave

Fund Source	Total/source	Obl Ttl	Envl	Design	ROW	Const	Other	ROWSup	Const Sup	PriorYrs	12/13	13/14	14/15	15/16	16/17	17/18	18/19
Add'l Need	710					710				0			710				
Local	1,613						1,613			0			1,613				
RDA	4,500			700		3,800				0	700		3,800				
RSTP	200					200				0			200				
Totals	7,023			700		4,710	1,613			0	700		6,323				

Comments 2014 RTIP: \$200K RSTP reprogrammed from RTC27 by RTC 12/5/13. Previously part of RTP#CO-P09 and CO-P50. 3/14: update schedule info; restricted to construct after Labor Day and schedule pending successful easement negotiations with the State Parks and the Harbor. Will seek

Ecology Action

Proj No: EA 01

South County Youth Bike Safety Training

Location

Const Sched: 3/14

Est. End: 11/15

PPNO:

School-based youth bicycle safety training at 8 PVUSD elementary and middle schools. Includes in classroom and on-the-bike training.

PVUSD - 8 schools

Fund Source	Total/source	Obl Ttl	Envl	Design	ROW	Const	Other	ROWSup	Const Sup	PriorYrs	12/13	13/14	14/15	15/16	16/17	17/18	18/19
Local	5					5				0		5					
RSTPX	30	30				30				0		30					
Totals	35	30				35				0		35					

Comments 2014 RTIP: \$30k RSTP approved by RTC 12/5/13, exchanged for RSTPX 3/6/14. 4/3/14: RTC changed lead public agency from City of Watsonville to RTC in order to streamline invoicing and oversight process.

Proj No: RTC 35 Bike/Walk School Incentive and Tracking Program (Boltage/Active4Me)

Location Const Sched: Fall 2013 Est. End: 9/15

PPNO: Bike/walk tracking and incentive program at four elementary schools. Use Boltage and Active4Me technology to encourage biking and walking to schools. Elementary Schools: 2 in So County (Starlight, HA Hyde), 2 Santa Cruz City (Gault, DeLaveaga)

Fund Source	Total/source	Obl Ttl	Envl	Design	ROW	Const	Other	ROWSup	Const Sup	PriorYrs	12/13	13/14	14/15	15/16	16/17	17/18	18/19
Matching	6						6			0			6				
RSTPX	50	50					50			0		25	25				
Totals	56	50					56			0		25	31				

Comments 5/1/14: RTIP amended to modify scope/title from "Boltage" to include Active4Me technology, as recommended by Bike Committee 4/7/14. \$50k RSTP approved 2/7/13 (\$25K exchanged 2/7/13; \$25k exchanged 3/6/14) for two year program implementation at 4 schools. Required to consult with So Co RTC reps on second So Co school location. Implementation at Gault, DeLaveaga and Starlight began fall 2013. 2nd So County school expected to launch Fall 2014; will meet with So Co reps to identify school site Spring 2014.

SCCRTC

Proj No: RTC 01 Freeway Service Patrol (FSP) on Hwy 1 and Hwy 17

Location Const Sched: Ongoing Est. End: Ongoing

PPNO: 0923 Maintain and expand tow truck patrols on Highways 1 and 17. Work with the CHP to quickly clear collisions, remove debris from travel lanes, and provide assistance to motorists during commute hours to keep incident related congestion to a minimum and keep traffic moving. Avg need: \$200k/yr constrained; \$400k/yr total cost.

Highway 17 from the Santa Clara/Santa Cruz county line to Mt. Hermon Rd in Scotts Valley. Highway 1 from Highway 9 in Santa Cruz to State Park Drive in Aptos.

Fund Source	Total/source	Obl Ttl	Envl	Design	ROW	Const	Other	ROWSup	Const Sup	PriorYrs	12/13	13/14	14/15	15/16	16/17	17/18	18/19
ARRA STR	180	180					180			180							
FSP Program	3,020						2,982			2,406	204	205	205				
RSTPX	450	450					450			180		135	135				
SAFE Reserves	322	152					322			221	70	31					
STIP	300						300			0				150	150		
STIP (SOF)	615	615					615			615							
Totals	4,887	1,397					4,849			3,602	274	371	340	150	150		

Comments 2014 RTIP: \$300k STIP approved by RTC 12/5/13. 2/7/13: \$270k RSTP approved for FY13/14-14/15, \$135K exchanged. \$135k RSTP exchanged for RSTPX by RTC 3/6/14. 10/1/09-approved as ARRA backup if other projects delayed. 2/5/09 - RTC approved \$180k ARRA. 6/4/09- RTC approved \$180k RSTP, exchanged for RSTPX 3/3/11. Prior: STIP for FY99-04 approved 3/5/98. Funds for FY 05-07 added in 2002 STIP. FY03/04-Due to statewide STIP shortfall FY03/04 STIP replaced by SAFE reserves and STIP shifted to FY07/08 and includes \$11K STIP reprogrammed from Rideshare program. 2004 RTIP proposed \$78K STIP in 04/05, and \$86K in 08/09 - NOT approved by CTC. 2004 STIP shifted 04/05 funds to 05/06 and did not include new funds for FY08/09. 1/06: Expanded scope to cover both Hwy 17 and Hwy 1. 4/07 RTC request for add'l \$100k/yr STIP for FY08/09-10/11 NOT approved by CTC. Prior reflects funds programmed since FY96/97. 2/7/08 RTC added \$100k/yr STIP FY08/09-12/13 - rejected by CTC 5/29/08.

Proj No: RTC 02

Commute Solutions Rideshare Program

Location

Const Sched: Ongoing

Est. End: Ongoing

PPNO: 0922

Transportation demand management outreach, education and incentives. Includes matching service for carpools, vanpools, and bicyclists. Provides services and information about availability and benefits of alternative transportation modes, including sharing rides, transit, walking, bicycling, telecommuting, alternative work schedules, alternative fuel vehicles, and park-n-ride lots. Avg annual cost: \$250k.

Countywide

<i>Fund Source</i>	<i>Total/source</i>	<i>Obl Titl</i>	<i>Envl</i>	<i>Design</i>	<i>ROW</i>	<i>Const</i>	<i>Other</i>	<i>ROWSup</i>	<i>Const Sup</i>	<i>PriorYrs</i>	<i>12/13</i>	<i>13/14</i>	<i>14/15</i>	<i>15/16</i>	<i>16/17</i>	<i>17/18</i>	<i>18/19</i>
CMAQ	1,496	1,495					1,496			1,496							
RSTP	432	132					432			232				200			
RSTPX	350	350					350			0	200	150					
STIP (SOF)	536	536					536			536							
Totals	2,814	2,513					2,814			2,264	200	150	200				

Comments 2/7/13: \$400k RSTP approved for FY13/14-14/15; \$200K exchanged 2/7/13. 4/3/14 shift \$200k RSTP to FY15/16. 6/4/09: \$250k RSTP approved by RTC. \$150k RSTP exchanged for RSTPX 3/6/14. \$132k RSTP approved 12/7/95 & 6/5/97. STIP approved by RTC 3/5/98 & 12/6/01. \$129.5 in RSTP originally programmed 98/99 and prior, transferred to other STP projects 5/00. Due to state STIP shortfall- FY03/04 STIP changed to CMAQ 6/5/03; FY04/05 STIP changed to CMAQ 3/04 (from Don't Drive Program). FY03/04 and FY04/05 STIP shifted to FY07/08 & 08/09 in 2004 STIP. 3/17/05 - \$596K CMAQ programmed to replace FY05/06-08/09 STIP. 4/07 RTC request for add'l \$150k/yr STIP for FY09/10-10/11 - NOT approved by CTC. 1/5/06-RTC added STIP funds for FY09/10-10/11 - NOT approved by CTC. 2/7/08 RTC added \$150k/yr STIP FY09/10-10/11 - rejected by CTC 5/29/08. 10/08 RTC approved extra \$586k in old CMAQ apportionment balances, available only to existing CMAQ projects. CMAQ funds obligated thru AMBAG OWP.

Proj No: RTC 03

SC Branch Rail Line Acquisition, Corridor Preservation and Improvements

Location

Const Sched: Spring 2013

Est. End: 2015

PPNO: 0932

Public purchase and improvement of the Santa Cruz Branch Rail Line right-of-way for preservation of current uses and future transportation purposes.

Davenport to Watsonville Junction

Includes: environmental studies, pre-acquisition, acquisition and some rail line infrastructure improvements.

Fund Source	Total/source	Obl Ttl	Envl	Design	ROW	Const	Other	ROWSup	Const Sup	PriorYrs	12/13	13/14	14/15	15/16	16/17	17/18	18/19
Earmark	1,490	1,490	240		1,250					1,490							
Prop 116	11,000	11,000	160		10,840					11,000							
RSTPX	1,315	1,315		700		615				700	615						
STIP	9,350	9,350			4,000	5,350				9,350							
STIP (SOF)	78	225	78							78							
TDA	317	95	50	5	262					317							
UP	430			100	330					430							
Totals	23,980	23,475	528	805	16,682	5,965				23,365	615						

Comments 5/3/12: Exchange \$450k RSTP for RSTPX. 12/1/11: \$615K RSTP approved for construction-to match/supplant similar amount STIP and \$450k for design-- 3/14 Budget: RTC released and exchanged \$615K RSTP for construction 3/6/14. 3/3/11: RTC approved seeking STIP allocation extension for construction funds; 18-month allocation extension to 12/30/12 approved by CTC 5/11. 1/19/11: CTC allocated Prop 116 and \$4M of \$4.65M STIP; rejected request for \$350K STIP for PS&E and \$100k for ROW; UP agreed to provide \$400K. 2/3/11: RTC approved \$250K RSTPX to replace STIP. Congressman Farr requested add'l \$1M FY11 appropriation for improvements, appropriations not included in fed budget. 5/6/10: Shift funds between ROW, eng, and construction with exact split TBD at time of CTC allocation -- CTC staff determined construction cannot be done as part of escrow account. 2010 RTIP: \$5M of STIP previously programmed as construction to be allocated as ROW/placed in an escrow account for improvements. STIP & Prop 116 allocation request originally sched for CTC 2/10 meeting. Prior: STIP for env'l apvd by RTC 3/5/98 (originally \$450k programmed, \$225k allocated, only \$78k spent). \$10M from 2000 STIP Aug apvd for ROW 9/7/00. \$1.5M federal earmark approved in 02/03 approp bill. \$300K in Prop 116 approved by CTC for preacquis activities 8/03. 2004 RTIP proposed STIP in FY04/05 or an AB3090 - NOT approved by CTC, CTC shifted ROW to FY08/09. 3/3/05--RTC voted to request AB3090 reimbursement if needed. 2006 RTIP: Shifted STIP funds from FY08/09 to FY07/08. 4/07 RTC shifted funds from FY07/08 to FY08/09 and expanded scope to include some construction. \$1,277k spent on studies prior to 1999 (MTIS and earlier). Includes preacquisition activities (negotiations, due diligence, etc). 2008 STIP: CTC shifted STIP funds to FY09/10, RTC had requested to keep funds in FY08/09. Formerly MTD 5.

Proj No: RTC 04

Planning, Programming & Monitoring (PPM) - SB45

Location

Const Sched: Ongoing

Est. End: Ongoing

PPNO: 0921

Development and amendments to state and federally mandated planning and programming documents, monitoring of programmed projects. Avg annual cost: \$250k/yr.

Countywide

Fund Source	Total/source	Obl Ttl	Envl	Design	ROW	Const	Other	ROWSup	Const Sup	PriorYrs	12/13	13/14	14/15	15/16	16/17	17/18	18/19
STIP	3,054	2,284				3,054				1,959	175	150	150	96	175	175	174
Totals	3,054	2,284				3,054				1,959	175	150	150	96	175	175	174

Comments 2014 RTIP: Add'l \$470k STIP approved by RTC 12/5/13 for FY17-FY19. 12/1/11: RTC approved add'l \$150k STIP for FY15/16-16/17, approved by CTC 3/29/12. 2010 RTIP: Added \$925k STIP= Increase STIP for FY10/11 and program STIP funds for FY11/12 -14/15. Prior: Approved by RTC on 3/5/98 for the 1998 RTIP; 2 add'l yrs of funds added in 2002 STIP. 2004 RTIP proposed add'l funds for FY04/05-06/07, but 2004 STIP only included new funds for FY07/08-08/09. 2006 RTIP/STIP: Added \$73K to FY06/07, \$150K to FY09/10 and \$150K to FY10/11. Additional \$150k for FY09/10 approved by RTC 4/09, approved by CTC 6/11/09.

Proj No: RTC 27

Monterey Bay Sanctuary Scenic Trail Network

Location

Const Sched: 2015

Est. End: ongoing

PPNO: 1872

A network of bicycle and pedestrian facilities. Includes master planning study and environmental review.

Trail segments adjacent to the Santa Cruz Branch Rail Line and spur trails along the coast/Monterey Bay National Marine Sanctuary.

Fund Source	Total/source	Obl Ttl	Envl	Design	ROW	Const	Other	ROWSup	Const Sup	PriorYrs	12/13	13/14	14/15	15/16	16/17	17/18	18/19
CoastConsv	250	250					250			250							
Earmark	1,280	1,280				1,280				543	#####	238					
Local	100	100				100				100							
RSTP	132					132				0			132				
Totals	1,762	1,629				1,762				892	500	238	132				

Comments Ultimately will link to MBSST in Monterey County and sections will be designated as part of the California Coastal Trail. 12/5/13: RTC shifted \$3.25M Earmark, \$200k RSTP, and STIP to Segment 7 (TRL 07SC), Twin Lakes (TRL 9b), and Segment 18-Lee Rd (TRL 18L) and reserved balance of Earmark and RSTP for Master Plan final expenses. 3/21/13 RTC shifted \$200K DEMO from CON to Master Plan; shifted design to FY14/15; approved by CTC 6/11/13. 8/2/12 RTC shifted \$300K demo from CON to "other" to reflect increased cost of Master Plan resulting from additional public comment and meetings. 12/1/11: RTC shifted design and construction funds to FY13/14; CTC shifted construction to FY14/15 in 2012 STIP (5/12-RTIP updated by RTC to match CTC action). Master Plan workshops underway Fall 2011. 3/3/11: RTC shifted STIP TE for design to FY12/13. To be constructed in sections as funds become available. 2010 RTIP: Shift funds to later years, with construction anticipated in FY12/13, reflect recent earmarks and local funds budgeted. Prior: 4/07 RTC requested \$785k STIP to match Fed Earmark- NOT approved by CTC. 4/07 Rail Trail and Coastal Trail Network projects/funds combined into this project. \$332k RSTP approved 5/00 originally for Master Plan/EIR. \$345k TE approved 4/04. \$1.5 TE approved 1/06. Fed appropriations & earmarks split between Santa Cruz and Monterey Counties. Only SC Co share of earmark/OA shown here: 2004-\$184K (\$51k obligated through AMBAG), 2005-\$181k, 2006-\$227.7k, 2008-\$245k, 2009-\$237.5k. \$5.8M & 1M approved as part of SAFETEA-LU (SCR shares-\$2.6M & \$450k). Previously PPNO 1868. Separate project: CO 32- Signs for portion of interpretive bike/ped trail completed. 2008 RTIP: Shifted funds to later years, with construction in FY10/11. 1/8/09 RTC shifted TE PS&E to FY10/11, approved by CTC 5/15/09. \$133k previously obligated by AMBAG on behalf of RTC, shifted to RTC to obligate 6/09. 12/09 add'l \$800K earmark approved in FY10 DOT budget (50% to Santa Cruz Co). Congressman Farr requesting add'l \$1M FY11 appropriation for the project.

Proj No: RTC 31

Park and Ride Lot Development

Location

Const Sched: 2013

Est. End: 2015-20

PPNO: NA

Upgrade and maintain existing park and ride lots for commuters countywide. Secure additional park and ride lot spaces for motorized vehicles and bicycles.

Countywide, with emphasis on southern sections of county.

Fund Source	Total/source	Obl Ttl	Envl	Design	ROW	Const	Other	ROWSup	Const Sup	PriorYrs	12/13	13/14	14/15	15/16	16/17	17/18	18/19
RSTPX	160	160				115	45			160							
Totals	160	160				115	45			160							

Comments \$160k RSTP approved by RTC 6/4/09. \$30k exchanged for RSTPX 6/18/09, add'l \$130K on 10/7/10.

Proj No: **RTC 32**

Bicycle Route Signage Countywide

Location

Const Sched: 2013

Est. End: 2015

PPNO: NA

Define routes, develop and install signs directing bicyclists to preferred routes to various destinations countywide.

Countywide

Fund Source	Total/source	Obl Ttl	Envl	Design	ROW	Const	Other	ROWSup	Const Sup	PriorYrs	12/13	13/14	14/15	15/16	16/17	17/18	18/19
Add'l Need	400			125		275				400							
RSTPX	100	100		75		25				100							
Totals	500	100		200		300				500							

Comments 2010 RTIP: update split of funds by phase. Prior: \$100k RSTP approved by RTC 6/4/09. \$25k exchanged for RSTPX 6/18/09, \$75K on 10/7/10. Total cost \$300K, plus ongoing maintenance. Include RTC managing program implementation and coordination with local jurisdictions.

SCCRTC/Caltrans

Proj No: **RTC 24**

91 - Hwy 1: HOV Lanes from Morrissey to San Andreas Rd

Location

Const Sched: TBD

Est. End: TBD

PPNO: 0073

Construct HOV or Carpool lanes on Highway 1 from San Andreas/Larkin Valley to Morrissey Boulevard, including auxiliary lanes, reconstruction of interchanges with enhanced bike and pedestrian facilities, arterial and ramp modifications to allow ramp metering, a new bike/ped crossing at Trevethan, and traffic operation system (TOS) element. [Cost if built in entirety: \$585,700. See stand alone projects (RTC24f,e,g,h,l,j,a,m) for cost of incremental implementation.]

In Santa Cruz County on Rte 1 between Morrissey Blvd and Larkin Valley Rd. (PM 7.26/16.15.9) - (18 miles in both directions)

Fund Source	Total/source	Obl Ttl	Envl	Design	ROW	Const	Other	ROWSup	Const Sup	PriorYrs	12/13	13/14	14/15	15/16	16/17	17/18	18/19
CMAQ	5,560	5,560	5,560							5,560							
RSTP	500		500							0			500				
RSTPX	5,774	5,774	5,774							5,774							
STIP	1,375	1,375	1,375							1,375							
Totals	13,209	12,709	13,209							12,709			500				

Comments 12/5/13: Additional \$500k RSTP approved for ENV by RTC, shift to FY14/15 (4/3/14). 1/12/12: \$70,300 RSTPX shifted to RTP STARS analysis. 12/1/11 - \$370k RSTP approved for tiered EIR to include Soq-41st Aux Lanes (RTC24f); exchanged for RSTPX 5/3/12. 8/11: At FHWA direction, EIR to be tiered document - Tier 1=program level for HOV, Tier 2=Soq-41st Aux Lanes. 11/11: FHWA agree Soq-Morrissey Aux Lane construction addresses "10-year rule". 2010 RTIP: RTC requested add'l \$1.45M STIP to complete final EIR and integrate STARS, NOT approved by CTC; 10/7/10 RTC programmed \$1.45M RSTPX to replace STIP. Prior: 8/02 RTC progmd \$3.8M STIP to project - NOT approved by CTC (10/02). 11/02 RTC prgmd \$3.8M RSTP. 4/03 add'l \$4.2M in CMAQ & RSTP aprvd. PSR and HOT Lanes Study completed Smr 02. \$320K from FHWA & \$66K Local funded HOT Lanes Study (not shown here). CMAQ & RSTP levels adjusted (changes to split of funds) 6/04 to accommodate needs of other projects and to obligate the region's CMAQ balance. 4/06-Add'l \$500K STIP prgmd by RTC 1/06, not approved by CTC. 6/1/06 \$440K RSTP exchanged and \$200K RSTP shifted to RTC 28. 6/07 \$219k RSTP exchanged. 4/07 RTC added \$2M RSTP, CMAQ & STIP to cover cost increases - \$216k STIP NOT approved by CTC. 2/7/08 RTC added \$1,375k STIP in 08/09 to address cost increases, approved by CTC 5/29/08. \$1765k RSTPX approved 6/5/08. Total est. cost of HOV: \$585M, without financing/phasing. Draft environmental document scheduled for release Spring 2014.

Proj No: RTC 24f

2 - Hwy 1: 41st to Soquel Av Auxiliary Lanes and Chanticleer Bike/Ped Bridge

Location

Const Sched: 1/18

Est. End: 3/19

PPNO: 0073A

Construct auxiliary lanes and a bicycle/pedestrian overcrossing of Hwy 1 at Chanticleer Ave. [Project level design/environmental analysis is currently underway as part of combined Tier 1/Tier 2 environmental effort to establish a Highway 1 Corridor Investment Program (Tier 1) and take a first step toward implementation with this project (Tier 2) upon approval of the final environmental document.]

On State Route 1 - 41st Ave to Soquel Av.

Fund Source	Total/source	Obl Tit	Envl	Design	ROW	Const	Other	ROWSup	Const Sup	PriorYrs	12/13	13/14	14/15	15/16	16/17	17/18	18/19
Add'l Need	21,000					21,000				0							21,000
STIP	4,000			2,570	1,430					0				4,000			
STIP (Reserves)	2,000					2,000				0							2,000
Totals	27,000			2,570	1,430	23,000				0				4,000			23,000

Comments 2014 RTIP: Shift design funds to FY15/16 to reflect updated environmental document schedule; reserve \$2M STIP for programming to construction in future STIP cycle. 12/1/11-RTC programmed \$4M STIP for design & ROW -- 5/3/12 update RTIP to shift funds to later years to match CTC adopted STIP. Env being done as part of tiered HOV EIR. In 2010 RTP-Aux lanes (RTC24f) and bridge (RTC24c) were expensed as part of HOV project.

Proj No: RTC 30

Hwy 1 Bicycle/Ped Overcrossing at Mar Vista

Location

Const Sched: 1/19

Est. End: 9/19

PPNO: 1968

Construct a bicycle/pedestrian overcrossing of Hwy 1 in vicinity of Mar Vista Drive, providing improved access to Seacliff and Aptos neighborhoods and schools.

Over Hwy 1 at Mar Vista Drive connecting Seacliff and Aptos.

Fund Source	Total/source	Obl Tit	Envl	Design	ROW	Const	Other	ROWSup	Const Sup	PriorYrs	12/13	13/14	14/15	15/16	16/17	17/18	18/19
RSTP	967			75	140	752				0					215	752	
STIP	6,564		500	575	1,060	4,429				0				500	1,635	4,429	
Totals	7,531		500	650	1,200	5,181				0				500	1,850	5,181	

Comments 2014 RTIP: Shift funds to later years to reflect updated schedule. 3/21/13: RTC shifted Env to FY14/15 and all other phases to FY16/17 based on updated HOV DED schedule; approved by CTC 6/11/13. 12/1/11: Shift funds into env'l, shift design/ROW to FY14/15; Const 15/16 - approved by CTC 3/29/12. 2010 RTIP: Shift funds out two years to match updated PA/ED schedule. PA/ED being completed as part of Hwy 1 HOV project (RTC24). Prior: 1/8/09 RTC shifted design to FY10/11, approved by CTC 5/15/09. 2/7/08 RTC shifted schedule out one year to match current PA/ED schedule - approved by CTC 5/29/08. 4/07 RTC approved \$6.5M STIP. \$967k RSTP. Previously CO-P34 in RTP.

SCMTD

Proj No: MTD 01

MetroBase Consolidated Bus Operations Facility

Location

Const Sched: 2005-2013

Est. End: 12/15

PPNO: 0924

Construct a new facility at a centralized location to consolidate 7 operations, maintenance and administration facilities.

Harvey West - Encinal St/Hwy 9. Initially planned for westside of Santa Cruz.

<i>Fund Source</i>	<i>Total/source</i>	<i>Obl Ttl</i>	<i>Envl</i>	<i>Design</i>	<i>ROW</i>	<i>Const</i>	<i>Other</i>	<i>ROWSup</i>	<i>Const Sup</i>	<i>PriorYrs</i>	<i>12/13</i>	<i>13/14</i>	<i>14/15</i>	<i>15/16</i>	<i>16/17</i>	<i>17/18</i>	<i>18/19</i>
FTA 5307	1,005	1,005				1,005				1,005							
FTA 5309	8,854	8,854	1,272	1,384	2,979	3,219				8,854							
Local	19,892	19,892	318	1,184	879	17,511				14,080	5812						
Prop 1B-SLPP	5,812	5,812				5,812				0	5812						
Prop1B-PTMISEA	26,459					26,459				20,387		5,900	172				
PTMISEA Interest	241					241				196	26	20					
STA	7,941	7,941		409	4,238	3,294				7,941							
STIC	3,376	3,376		1,871	397	1,108				3,376							
STIP	1,137	1,137				1,137				1,137							
STIP (AB3090 Reim)	6,363	6,363				6,363				6,363							
Totals	81,080	54,379	1,590	4,848	9,498	65,144				63,338	11,650	5,920	172				

Comments 2014 RTIP: Update matching fund information. 12/11: Submitted LONP for PTMISEA to start Ops Facility const. 9/09: Updated matching funds, per MTD info/FTIP. 2008 RTIP: Received Prop 1B Transit funds for Operations building. \$6M STIP approved by the RTC on 3/5/98, additional \$1.8 STIP approved 6/3/99. Project sched revised 4/00, CTC 6/00. \$7.8M in STIP lapsed Feb&June 02 due to project delays. 5/2/02 RTC indicated intent to reprogram in 2004 STIP. RTC reprogrammed \$7.8M in FY06/07 as part of 2004 RTIP Proposal 4/04 & proposed AB3090 in FY07/08 as backup. CTC rejected initial request 8/04. RTC traded STIP for RSTP for several projects and programmed freed up \$6.4M STIP in 06/07, plus \$1.1M RSTP to this project 10/04. CTC aprvd 1/05. 3/17/05--RTC approved AB3090 reimbursement designation for FY07/08. 7/14/05-- CTC approved AB3090 Reimb for FY08/09. Initial bids 8/05 were high, bid contracts split - 1st one awarded 12/05, construction started 2/06. 2nd to bid/award/construct Spring/Smr 06. 2006 RTIP proposed to shift AB3090 Reimbursement from FY08/09 to FY06/07 -NOT approved by CTC. 1/06 Matching fund info updated. 6/06: RTC traded \$1.137M RSTP for STIP funds, approved by CTC 9/06. Project updates online at <http://www.scmt.com/metrobase>.

Proj No: MTD 20

Mainline Routes Runtime Recalibration

Location

Const Sched: 4/14

Est. End: 10/14

PPNO:

Data collection, analysis and recalibration of route runtimes to improve reliability of arrival and departure timepoints/schedule for major routes (69, 71, 91).

Watsonville-Santa Cruz mainline routes (69, 71, 91)

<i>Fund Source</i>	<i>Total/source</i>	<i>Obl Ttl</i>	<i>Envl</i>	<i>Design</i>	<i>ROW</i>	<i>Const</i>	<i>Other</i>	<i>ROWSup</i>	<i>Const Sup</i>	<i>PriorYrs</i>	<i>12/13</i>	<i>13/14</i>	<i>14/15</i>	<i>15/16</i>	<i>16/17</i>	<i>17/18</i>	<i>18/19</i>
Local	4						4			0		4					
RSTPX	30	30					30			0		30					
Totals	34	30					34			0		34					

Comments 2014 RTIP: RTC approved \$30k RSTP 12/5/13, exchanged for RSTPX 3/6/14.

Proj No: MTD 21

ParaCruz Van Replacement 2014

Location

Const Sched: 8/14

Est. End: 3/15

PPNO: 2553

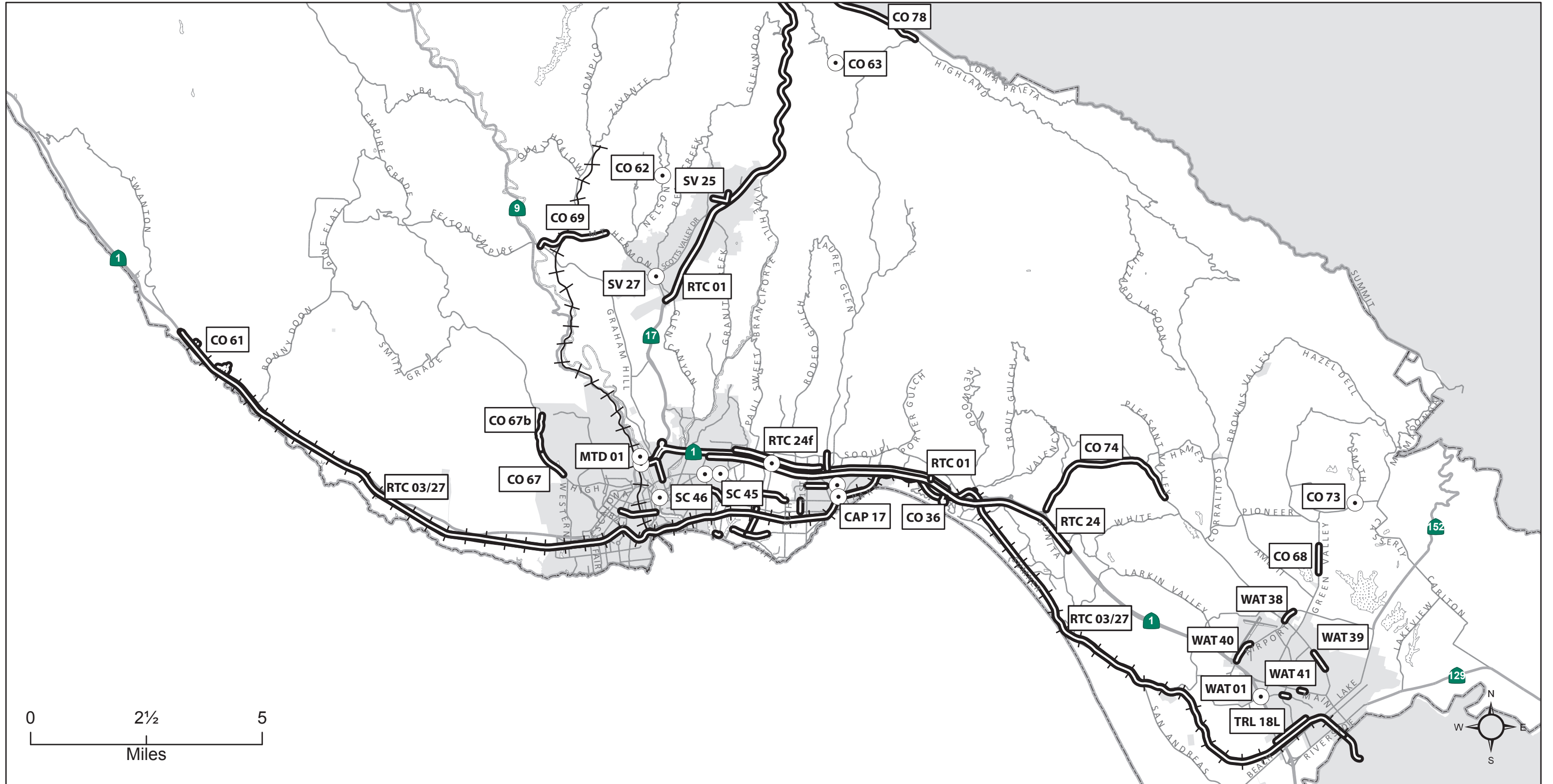
4 replacement vehicles for ADA Complementary Paratransit Service. (2 light-duty CNG vans & 2 medium-duty gas fueled paratransit buses)

Santa Cruz County

<i>Fund Source</i>	<i>Total/source</i>	<i>Obl Ttl</i>	<i>Envl</i>	<i>Design</i>	<i>ROW</i>	<i>Const</i>	<i>Other</i>	<i>ROWSup</i>	<i>Const Sup</i>	<i>PriorYrs</i>	<i>12/13</i>	<i>13/14</i>	<i>14/15</i>	<i>15/16</i>	<i>16/17</i>	<i>17/18</i>	<i>18/19</i>
Local	86					86				0			86				
STIP	345					345				0			345				
Totals	431					431				0			431				

Comments 2014 RTIP: RTC approved \$345k STIP. Reduce match by \$20K 3/17/14, per updated cost estimate. (initially listed as MTD02A)

Programmed RTIP Projects by SCCRTC - Countywide

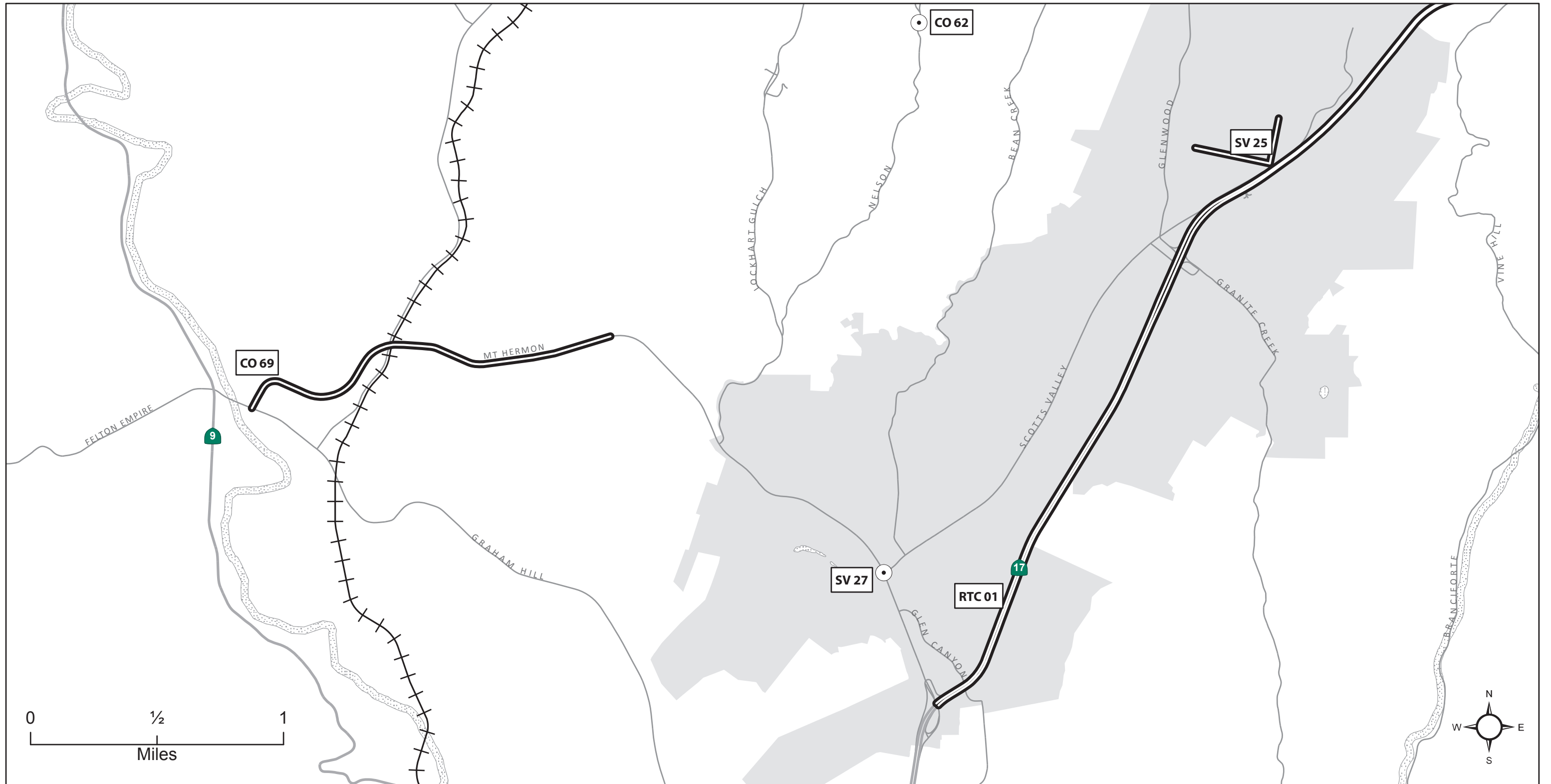


RTIP Project
 RTIP Project
 State Highways
 Major Roads

Date: 5/29/2014

Note: This map was created for illustration purposes only. The mapped location and extent of individual projects are approximate. Refer to the project list or project sponsors for more detailed information about individual projects. Some projects may appear on more than one map.

Programmed RTIP Projects by SCCRTC - Scotts Valley/Felton Area

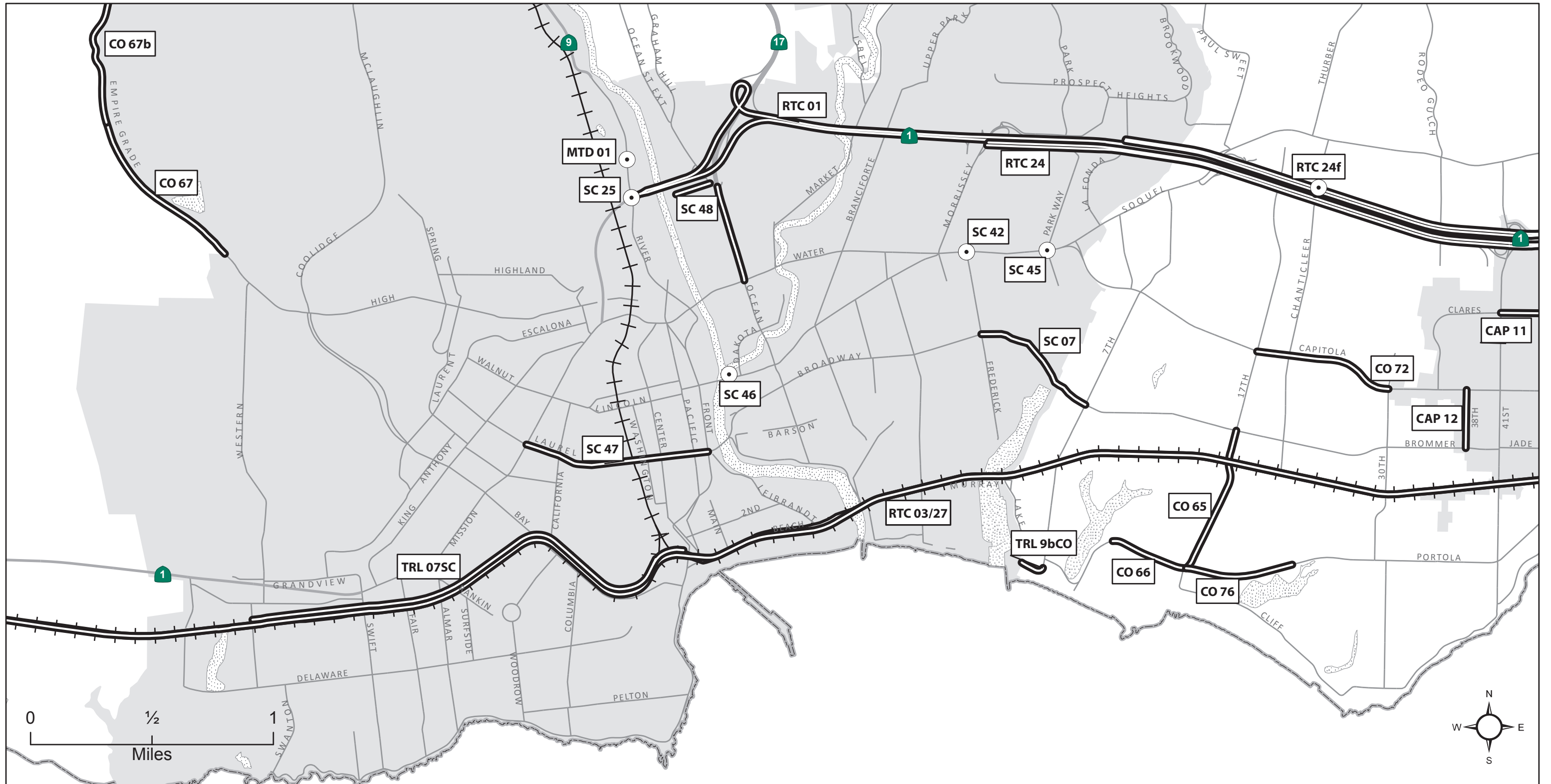


○ RTIP Project **▬** RTIP Project — State Highways — Major Roads

Date: 5/29/2014

Note: This map was created for illustration purposes only. The mapped location and extent of individual projects are approximate. Refer to the project list or project sponsors for more detailed information about individual projects. Some projects may appear on more than one map.

Programmed RTIP Projects by SCCRTC - Santa Cruz/Live Oak Area

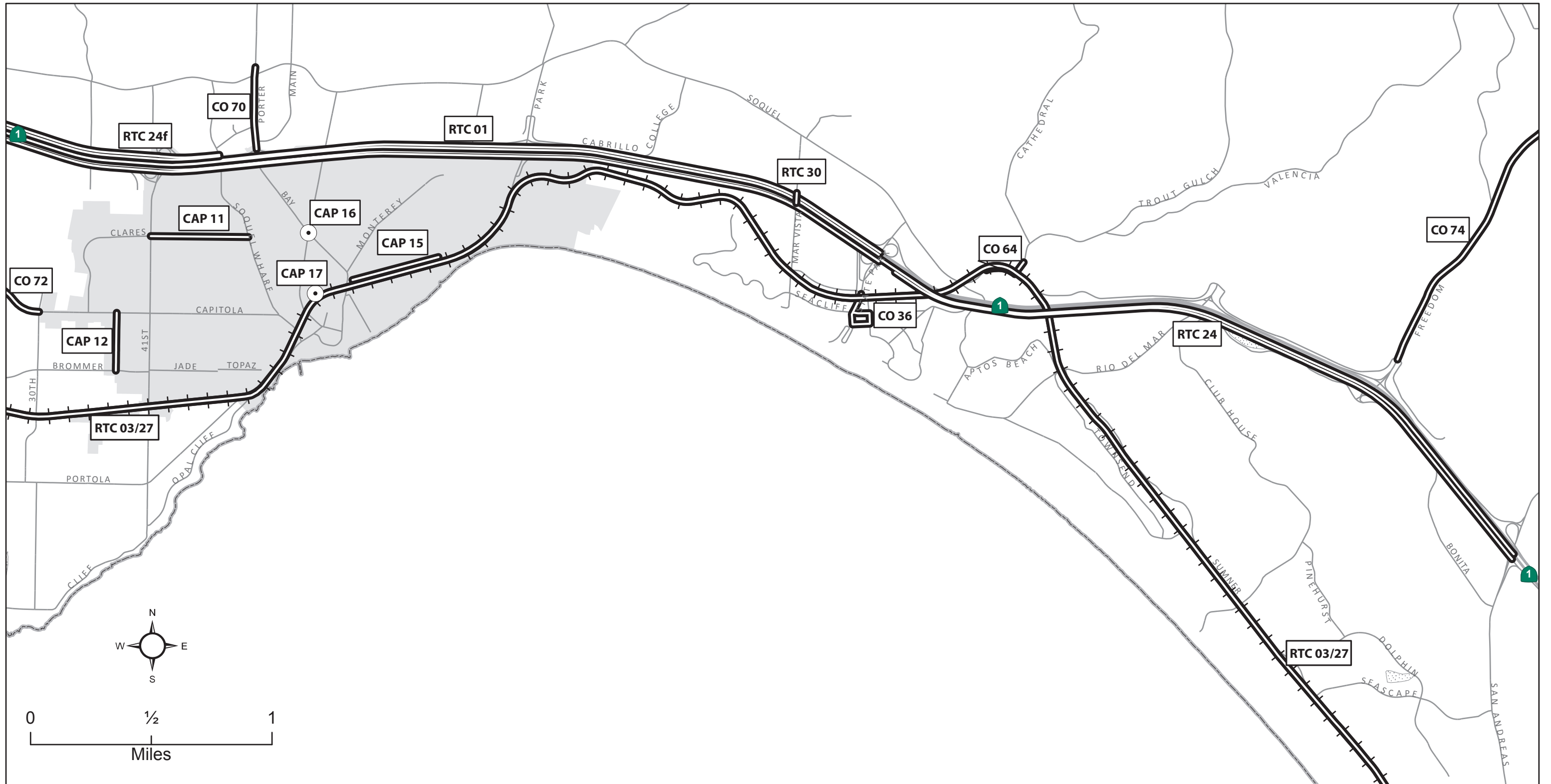


RTIP Project
 RTIP Project
 State Highways
 Major Roads

Date: 5/29/2014

Note: This map was created for illustration purposes only. The mapped location and extent of individual projects are approximate. Refer to the project list or project sponsors for more detailed information about individual projects. Some projects may appear on more than one map.

Programmed RTIP Projects by SCCRTC - Capitola/Aptos Area

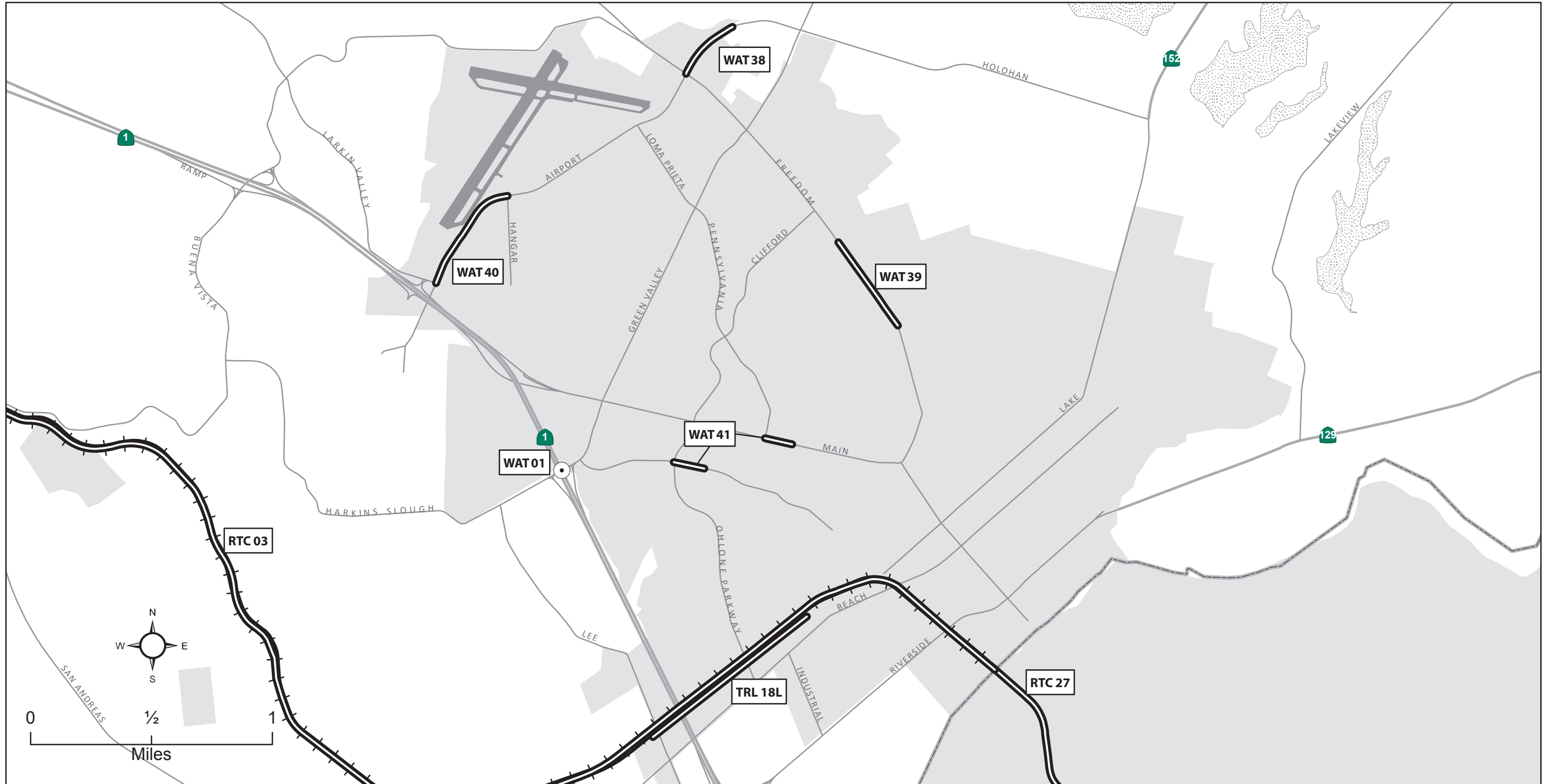


⊙ RTIP Project
▬ RTIP Project
— State Highways
— Major Roads

Date: 5/29/2014

Note: This map was created for illustration purposes only. The mapped location and extent of individual projects are approximate. Refer to the project list or project sponsors for more detailed information about individual projects. Some projects may appear on more than one map.

Programmed RTIP Projects by SCCRTC - Watsonville Area



⊙ RTIP Project
 ▬ RTIP Project
 — State Highways
 — Major Roads

Date: 5/29/2014

Note: This map was created for illustration purposes only. The mapped location and extent of individual projects are approximate. Refer to the project list or project sponsors for more detailed information about individual projects. Some projects may appear on more than one map.

RTIP 2014 - Programmed Projects Not Mapped

<u>RTP ID</u>	<u>Project</u>	<u>Location</u>
CO 71	Bear Creek Rd Surface Seal	PM 4.75 - PM 7.0
EA 01	South County Youth Bike Safety Training	PVUSD - 8 schools
MTD 20	Mainline Routes Runtime Recalibration	Watsonville-Santa Cruz mainline routes (69, 71, 91)
MTD 21	ParaCruz Van Replacement 2014	Santa Cruz County
RTC 02	Commute Solutions Rideshare Program	Countywide
RTC 04	Planning, Programming & Monitoring (PPM) - SB45	Countywide
RTC 31	Park and Ride Lot Development	Countywide, with emphasis on southern sections of county.
RTC 32	Bicycle Route Signage Countywide	Countywide
RTC 35	Bike/Walk School Incentive and Tracking Program (Boltage/Active4Me)	Elementary Schools: 2 in So County (Starlight, HA Hyde), 2 Santa Cruz City (Gault, DeLaveaga)
VAR 01	Santa Cruz County Open Streets	Countywide

APPENDIX C: PROJECTS COMPLETED SINCE 2012 RTIP ADOPTION

City of Scotts Valley

Proj No: SV 24

Bean Creek Road Sidewalks

Project Completed: 2013

PPNO: NA

Add sidewalks on north side of Bean Creek Rd adjacent to Scotts Valley Middle School. Add sidewalk and ADA ramp on south side of road at corner of Bluebonnet.

<i>Fund Source</i>	<i>Total/source</i>	<i>Obl Til</i>	<i>Envl</i>	<i>Design</i>	<i>ROW</i>	<i>Const</i>	<i>Other</i>	<i>ROWSup</i>	<i>Const Sup</i>	<i>Prior</i>	<i>08/09</i>	<i>09/10</i>	<i>10/11</i>	<i>11/12</i>	<i>12/13</i>	<i>13/14</i>	<i>14/15</i>
RSTPX	75	75				75						75					
Totals	75	75				75						75					

Proj No: SV 26

**Scotts Valley Dr Slurry Seal, Rehabilitation, and Restriping:
Mt. Hermon Rd to Granite Creek Rd**

Project Completed: Nov 2013

PPNO:

Slurry seal resurfacing, rehabilitation, and restriping.

<i>Fund Source</i>	<i>Total/source</i>	<i>Obl Til</i>	<i>Envl</i>	<i>Design</i>	<i>ROW</i>	<i>Const</i>	<i>Other</i>	<i>ROWSup</i>	<i>Const Sup</i>	<i>Prior</i>	<i>08/09</i>	<i>09/10</i>	<i>10/11</i>	<i>11/12</i>	<i>12/13</i>	<i>13/14</i>	<i>14/15</i>
Local	44		1	10		33									11	33	
RSTPX	225	225				225										225	
Totals	269	225	1	10		258									11	258	

City of Watsonville

Proj No: WAT 31

Freedom Blvd Rehab (High-Broadis/Lincoln)

Project Completed: Spring 2012

PPNO: 2204 (1175)

Rehab roadway and add 0.7 miles of bike lanes. Remove and replace curb, gutter and sidewalk, construct ADA upgrades, plus install conduit, boxes, and vaults for future utility undergrounding project.

<i>Fund Source</i>	<i>Total/source</i>	<i>Obl Til</i>	<i>Envl</i>	<i>Design</i>	<i>ROW</i>	<i>Const</i>	<i>Other</i>	<i>ROWSup</i>	<i>Const Sup</i>	<i>Prior</i>	<i>08/09</i>	<i>09/10</i>	<i>10/11</i>	<i>11/12</i>	<i>12/13</i>	<i>13/14</i>	<i>14/15</i>
Local	949		2	158		789					327						
RSTPX	751	751				751											
Totals	1,700	751	2	158		1,540					327						

Proj No: WAT 36

Green Valley Road Rehab-Phase 2

Project Completed: 10/11/11

PPNO: NA

Road rehabilitation, slope improvements/retaining walls, fill gaps in sidewalks and bicycle facilities, ADA upgrades, bus turnouts/shelters.

Fund Source	Total/source	Obl Ttl	Envl	Design	ROW	Const	Other	ROWSup	Const Sup	Prior	08/09	09/10	10/11	11/12	12/13	13/14	14/15
ARRA	1,837	1,837				1,837						1,837					
ARRA TE	164	164				164						164					
Local	796		25	25		746					50	746					
Totals	2,796	2,000	25	25		2,746					50	2,746					

County Health Services Agency

Proj No: CO 50B

South County Bicycle and Pedestrian Work Group (SCBPWG)

Project Completed: 6/30/12

PPNO: NA

Safety education programs in south county. Includes distribution of safety education materials, bike helmet use promotions, pedestrian safety campaign, and bike and walk to school events.

Fund Source	Total/source	Obl Ttl	Envl	Design	ROW	Const	Other	ROWSup	Const Sup	Prior	08/09	09/10	10/11	11/12	12/13	13/14	14/15
County	38						38					17	21				
RSTPX	100	100					100					50	50				
Totals	138	100					138					67	71				

County of Santa Cruz

Proj No: CO 02

Graham Hill Road Improvements near Roaring Camp

Project Completed: Feb 2013

PPNO: 0930

Widen shoulders, improve drainage, and add left turn pocket at Roaring Camp.

Fund Source	Total/source	Obl Ttl	Envl	Design	ROW	Const	Other	ROWSup	Const Sup	Prior	08/09	09/10	10/11	11/12	12/13	13/14	14/15
Local	855		50	175		630							630				
RSTPX	310	310	149			161											
STIP	2,976	2,976	100	125	80	2,671							2,671				
Totals	4,141	3,286	299	300	241	3,301							3,301				

Proj No: CO 17B

Calabasas Rd Widening, Bike Lanes and Sidewalks

Project Completed: 5/17/13

PPNO: 2304

Install bike lanes, curb, gutter, sidewalks, and rehab on Calabasas Road.

<i>Fund Source</i>	<i>Total/source</i>	<i>Obl Ttl</i>	<i>Envl</i>	<i>Design</i>	<i>ROW</i>	<i>Const</i>	<i>Other</i>	<i>ROWSup</i>	<i>Const Sup</i>	<i>Prior</i>	<i>08/09</i>	<i>09/10</i>	<i>10/11</i>	<i>11/12</i>	<i>12/13</i>	<i>13/14</i>	<i>14/15</i>
Local	751		5	141	10	595				146					595		
RSTPX	250	250				250									250		
STIP (TE)	1,050	1,050				1,050									1050		
TDA	390	387				390									390		
Totals	2,441	1,687	5	141	10	2,285				146					2,285		

Proj No: CO 51

Corralitos Rd Left Turn Ln (Bradley Elementary School)

Project Completed: 8/20/13

PPNO: 2205

Add left turn lane on Corralitos Rd at Bradley Elementary School.

<i>Fund Source</i>	<i>Total/source</i>	<i>Obl Ttl</i>	<i>Envl</i>	<i>Design</i>	<i>ROW</i>	<i>Const</i>	<i>Other</i>	<i>ROWSup</i>	<i>Const Sup</i>	<i>Prior</i>	<i>08/09</i>	<i>09/10</i>	<i>10/11</i>	<i>11/12</i>	<i>12/13</i>	<i>13/14</i>	<i>14/15</i>
AB2766	130					130									130		
Local	100		5	35	10	80							10	10	80		
RSTPX	278	278				278									278		
Totals	508	278	5	35	10	488							10	10	488		

Proj No: CO 55

Lump Sum Road Repairs-2010

Project Completed: 2/11

PPNO: NA

Pavement preservation - cape seal coat and overlay on various roads.

<i>Fund Source</i>	<i>Total/source</i>	<i>Obl Ttl</i>	<i>Envl</i>	<i>Design</i>	<i>ROW</i>	<i>Const</i>	<i>Other</i>	<i>ROWSup</i>	<i>Const Sup</i>	<i>Prior</i>	<i>08/09</i>	<i>09/10</i>	<i>10/11</i>	<i>11/12</i>	<i>12/13</i>	<i>13/14</i>	<i>14/15</i>
ARRA	2,545	2,545				2,545						2,545					
Local	157			123		34						157					
RSTP	777	777				777						777					
RSTPX	148	148				148						148					
Totals	3,628	3,470		123		3,505						3,628					

Proj No: CO 57

Soquel-San Jose Rd Overlay

Project Completed: Summer 2012

PPNO: NA

Road repairs: Asphalt concrete overlay (est. 3 miles)

<i>Fund Source</i>	<i>Total/source</i>	<i>Obl Ttl</i>	<i>Envl</i>	<i>Design</i>	<i>ROW</i>	<i>Const</i>	<i>Other</i>	<i>ROWSup</i>	<i>Const Sup</i>	<i>Prior</i>	<i>08/09</i>	<i>09/10</i>	<i>10/11</i>	<i>11/12</i>	<i>12/13</i>	<i>13/14</i>	<i>14/15</i>
Local	77		7	10		61								77			
RSTPX	760	760	0	0		760								760			
Totals	837	760	7	10		821								837			

Proj No: CO 58

Soquel Drive Overlay

Project Completed: Summer 2012

PPNO: NA

Road repairs: Asphalt concrete overlay.

<i>Fund Source</i>	<i>Total/source</i>	<i>Obl Ttl</i>	<i>Envl</i>	<i>Design</i>	<i>ROW</i>	<i>Const</i>	<i>Other</i>	<i>ROWSup</i>	<i>Const Sup</i>	<i>Prior</i>	<i>08/09</i>	<i>09/10</i>	<i>10/11</i>	<i>11/12</i>	<i>12/13</i>	<i>13/14</i>	<i>14/15</i>
Local	105		2	1	48	482								105			
RSTPX	700	700				700								700			
Totals	805	700	2	1	48	1,182								805			

SCCRTC

Proj No: RTC 33

STARS for RTP

Project Completed: 6/14

PPNO:

Use of Sustainable Transportation Access Rating System (STARS) to analyze the 2014 Regional Transportation Plan update.

<i>Fund Source</i>	<i>Total/source</i>	<i>Obl Ttl</i>	<i>Envl</i>	<i>Design</i>	<i>ROW</i>	<i>Const</i>	<i>Other</i>	<i>ROWSup</i>	<i>Const Sup</i>	<i>Prior</i>	<i>08/09</i>	<i>09/10</i>	<i>10/11</i>	<i>11/12</i>	<i>12/13</i>	<i>13/14</i>	<i>14/15</i>
Local	44						44							15	17	12	
RSTPX	70	70					70							70			
Totals	114	70					114							85	17	12	

SCCRTC/Caltrans

Proj No: RTC 28

Hwy 1 Auxiliary Lanes: Soquel Ave. to Morrissey Blvd.

Project Completed: 12/13

PPNO: 6500

Construct auxiliary lanes, northbound and southbound, between Soquel Avenue and Morrissey Boulevard Interchanges. Replace La Fonda Bridge, including wider bicycle lanes and sidewalks.

<i>Fund Source</i>	<i>Total/source</i>	<i>Obl Til</i>	<i>Envl</i>	<i>Design</i>	<i>ROW</i>	<i>Const</i>	<i>Other</i>	<i>ROWSup</i>	<i>Const Sup</i>	<i>Prior</i>	<i>08/09</i>	<i>09/10</i>	<i>10/11</i>	<i>11/12</i>	<i>12/13</i>	<i>13/14</i>	<i>14/15</i>
CMIA	13,783	13,783				13,783							13,783				
Earmark	2,642	2,642	1,520	677	281			164		1,122							
Local	34	34	34														
RSTPX	954	954	667	287						368			386				
STIP	2,734	2,734	146	326	71	2,150		41		484			2,150				
Totals	20,147	20,147	2,367	1,290	352	15,933		205		1,974			16,319				

SCMTD

Proj No: MTD 19

Bus Stop Upgrades

Project Completed: 12/13

PPNO: 2284

Install, replace, repairs, and otherwise improve bus shelters and stops.

<i>Fund Source</i>	<i>Total/source</i>	<i>Obl Til</i>	<i>Envl</i>	<i>Design</i>	<i>ROW</i>	<i>Const</i>	<i>Other</i>	<i>ROWSup</i>	<i>Const Sup</i>	<i>Prior</i>	<i>08/09</i>	<i>09/10</i>	<i>10/11</i>	<i>11/12</i>	<i>12/13</i>	<i>13/14</i>	<i>14/15</i>
Local	13					13							13				
STIP	500	500				500							500				
Totals	513	500				513							513				

APPENDIX D: PERFORMANCE MEASURES

Performance measures are included in the 2014 RTIP as required in the 2014 STIP Guidelines. Due to funding and staffing constraints, projected and/or baseline data is not available to quantitatively measure performance indicators. With development of the 2014 Regional Transportation Plan (RTP) and Metropolitan Transportation Plan (MTP) the region is in the process of analyzing the impact projects will have on many of these measures, however the data is not currently available for publication. No project-level analysis (*per Part C of CTC Guidelines*) is required for projects proposed for STIP funds this cycle.

Part A: 2014 STIP Guidelines provide a list of performance indicators and measures, shown in the table below. The CTC recognizes that these performance measures may not reflect the measures identified in every region's RTP and that quantitative data may not be available. NA is stated when information is not available, not applicable, or not measurable.

Performance Indicators and Measures						
Indicator	Relation to STIP Sec 19 Performance Criteria	Performance Measures			Current System Performance (Baseline)	Projected Impact of Projects
		Mode	Level*	Measure		
Safety	2	Roadway	Region	Fatalities per Vehicle Miles Traveled (VMT) and per capita	0.0000015%	Reduce
	2			Fatal Collisions per VMT and per capita	NA	Reduce
	2			Injury Collisions per VMT and per capita	0.000075%	Reduce
	2	Transit	Mode	Fatalities / Passenger Miles	NA	Reduce
Mobility	1	Roadway	Region	Passenger Hours of Delay / Year	3,569,612*	Reduce
	1			Average Peak Period Travel Time	10:07:00 **	Reduce
	1			Average Non-Peak Period Travel Time	6:05:00 **	Reduce
Accessibility	4 (also 1,3,6,7)	Transit	Region	Percentage of population within 1/2 mile of a rail station or bus route.	NA	NA
		All	Region	Average travel time to jobs or school.	NA	NA
Reliability	1	Roadway	Corridor	Travel Time Variability (buffer index)	NA	Reduce
	1	Roadway	Corridor	Daily vehicle hours of delay per capita	NA	Reduce
	1	Roadway	Corridor	Daily congested highway VMT per capita	NA	Reduce
	5	Transit	Mode	Percentage of vehicles that arrive at their scheduled destination no more than 5 minutes late.	NA	Reduce
Productivity (Throughput)	7	Roadway - Vehicles	Corridor	Average Peak Period Vehicle Trips	NA	Reduce
	7			Average Daily Vehicle Trips (ADT)	See Exhibit A	Reduce
	6,7,8			Daily VMT per capita	NA	Increase
	7	Roadway - People	Corridor	Average Peak Period Vehicle Trips Multiplied by the Occupancy Rate	NA	Increase
	7			Average Daily Vehicle Trips Multiplied by the Occupancy Rate	NA	Increase
	7	Trucks	Corridor	Percentage of ADT that are (5+ axle) Trucks	NA	NA
	7			Average Daily Vehicle Trips that are (5+ axle) Trucks	NA	NA
	7	Transit	Mode	Passengers per Vehicle Revenue Hour	NA	Increase
	7			Passengers per Vehicle Revenue Mile	NA	Increase
7	Passenger Mile per Train Mile (Intercity Rail)			NA	NA	
7	Boardings per capita			NA	No change	
System Preservation	3	Roadway	Region	Total number of Distressed Lane Miles	NA	Reduce
	3			Percentage of Distressed Lane Miles	NA	Reduce
	3			Percentage of Roadway at Given IRI Levels	NA	Reduce
	3			Percentage of highway bridges in need of repair (by number of bridges and by deck area)	NA	Reduce
Environmental Impact	6	All	Region	Carbon dioxide emissions per capita	NA	Reduce
				Criteria pollutant emissions per capita	NA	Reduce
Return on Investment/ Lifecycle Cost	1-7	All	Corridor	Percentage rate of return	NA	NA
*Level:	Corridor - Routes or route segments that are identified by regions and Caltrans as being significant to the transportation system. Region - Region or county commission that is responsible for RTIP submittal Mode - One of the following transit types (light rail, heavy rail, commuter rail, trolley bus, and all forms of bus transit).					

Part B

All projects programmed in the Santa Cruz County 2014 RTIP are consistent with the goals and objectives of the 2010 Regional Transportation Plan (RTP). The table below lists the performance measures adopted by the RTC for the 2010 RTP which provide a systematic process to guide transportation investment. The RTC considered the performance measures listed below when selecting projects for the 2014 RTIP. The projected impact of projects included in the 2014 RTIP and 2010 RTP is shown below.

Performance Measures	Baseline - Current	2035 Projections* with Implementation of 2014 RTIP and RTP
MAINTENANCE: Backlog of road maintenance and buses/bus facilities overdue for maintenance	\$300M backlog for roads; \$50 million for transit	Decrease: Backlog of roadway preservation and transit vehicle replacements reduced by projects
ENVIRONMENT: Smog forming pollutants - tons	88.62 tons of emissions from motor vehicles per day	19.95 tons of emissions from motor vehicles per day. Shift more trips to walk, bike, and transit. Reduce idling.
EQUITY: Transportation expenditures per jurisdiction & per mode	Involve broad range of stakeholders and public in project selection; consider equity when distributing funds	Implement balance of multimodal projects; within all RTC funding programs, balance needs communitywide
VEHICLE OCCUPANCY: Average vehicle occupancy on Highways 1 & 17	1.4 during AM peak; 1.2 during PM peak	Increase with expansion of bus service, continuation of the regional rideshare program
CONGESTION: Vehicle hours of delay analysis**	Freeway: 488am-587pm Multilane: 92am-114pm Two lane: 9,299am-11,320pm	Freeway: 1,993am-2,374pm Multilane: 306am-371pm Two lane: 16,126am-19,592pm
COMMUTE: Average Commute time (minutes)	29.3 min	Will increase. Partly dependent on land use decisions/population increases
TRANSIT: Ridership	4.6M/year	Increase with added bus service
TRANSIT: Number of jobs and housing units within 1/4 mile of transit stops (not route) on fixed routes.	Data being developed for SCS (est. June 2014)	Could increase with added bus service, but partly dependent on land use decisions
PARATRANSIT: Number of paratransit & sr/disabled fixed route rides/% of population that is elderly or disabled***	806,326 rides available to 8% of population	Rides needed/provided to increase as elderly population projected to increase exponentially
BIKE: Miles of Class 1 & 2 bikeways	99.7	Increase by approximately than 5 miles
BIKE: Rate of reported bike collisions to population	1 per 1748	Decrease with added bikeways, safety programs
PEDESTRIAN: Miles of pedestrian facilities - sidewalks/paths	Data not currently available	Increase- Several projects include new sidewalks and paths
PEDESTRIAN: Rate of reported pedestrian collisions to population	1 per 3143	Decrease with added sidewalks, safety programs

*Constrained by limited resources available to Commission staff for Collecting data

**Total AMBAG Region

***Reflects minimum number of trips that could be made based on annual sales of Senior and Disabled trip passes

Project Benefits Summary - 2014 STIP Nominations

PPNO	Agency	Title/Description	Summary of Benefits	New STIP
73A	SCCRTC/ Caltrans	Hwy 1 41st Ave-Soquel Ave Auxiliary Lanes and Chanticleer Bike/Ped Bridge (construction <u>reserve</u>)	Reduce delay and collisions. Improve pedestrian/bike access across highway. Heavily traveled - over 100,000 vehicles per day. Daily congestion results in bypass traffic on local arterials; increased travel times and delay; auxiliary lanes from 41st Avenue to Soquel Drive, including a bike/pedestrian crossing at Chanticleer, as the most beneficial change that can be made to Highway 1.	\$2,000,000
4658	Santa Cruz/ Caltrans	State Routes 1/9 Intersection Improvements (construction)	Improve access and safety; reduce congestion and bottleneck, energy use and emissions. Heavily traveled (approx 85K/day), provides access for the UCSC, Santa Cruz west side, Harvey West Business Area and Downtown.	\$479,000
921	SCCRTC	Planning, Programming & Monitoring (PPM) (3 years of funding)	Ensure that state and federal requirements are met for projects so funding is secured and not lost and delays due to funding are avoided.	\$470,000
923	SCCRTC	Freeway Service Patrol: Highway 1 (2 years of funding)	Reduce non-recurrent congestion, which is estimated to cause 30-50% of congestion; reduce emissions caused by idling; improve safety by reducing likelihood of secondary collisions; reduce delay. Hwy 1 ADT over 100K/day.	\$300,000
2553	Santa Cruz METRO	ParaCruz Van Replacement/CNG vans and medium-duty gas fueled paratransit buses	Maintain mandatory ADA Complementary Paratransit system in a state of good repair. Maintain public transit accessibility without the excessive costs required to maintain obsolete equipment. More advanced technology on new vehicles reduces fuel consumption and emissions. Allows the potential for more combined trips which could lower total VMT in the paratransit system.	\$345,000
2554	Capitola	Bay Avenue/Capitola Avenue Roundabout Intersection Modification (design)	Intersection operates at an adverse LOS and queuing length during the PM peak hour. Roundabout would improve the intersection LOS and queuing to LOS C or better. Simplifies intersection and improves accessibility for pedestrians and bicyclists through reduced conflicts and vehicle speeds.	\$59,000

PPNO	Agency	Title/Description	Summary of Benefits	New STIP
2555	Watsonville	Airport Boulevard Improvements (1200 feet east of Westgate Drive/Larkin Valley Road to east of Hanger Way)/Reconstruct roadway, install new sidewalk, upgrade curb ramps and other pedestrian facilities	Major transportation corridor (ADT 18,000). Improve safety by creating a high visibility crosswalk; system preservation; fill gaps in sidewalk network; improve access for the disabled with curb ramps and increase access to bus facilities; reduce pedestrian crossing distance; add pedestrian signal heads, pedestrian-actuated traffic signals and audible countdown pedestrian signal heads.	\$1,195,000
2556	Watsonville	Sidewalk Infill Harkins Slough Road and Main Street (Harkins Slough Road: east of Ohlone Parkway; and Main Street: Pennsylvania Dr-Pacifica Blvd)	Fills gap in sidewalk network; provide access to High School, transit, employment centers, commercial; safety	\$120,000
2557	Santa Cruz Co.	Cassery Rd Bridge Replacement (over tributary of Green Valley Creek near Smith Rd intersection)	Open up bridge to 2 lanes, system preservation.	\$125,000
2558	Santa Cruz Co.	Freedom Blvd Cape Seal (Hwy 1 to Pleasant Vly Rd)	System preservation. PCI 26-46. Used by autos (ADT 15,700), buses, bikes, Aptos High. Connects communities of Aptos, Corralitos and Freedom.	\$800,000
TOTAL				\$5,893,000

APPENDIX E: PROJECT PROGRAMMING REQUEST (PPR) FORMS

*Submitted to Caltrans and California Transportation Commission (CTC) only.
Not shown here, but available upon request.*

Similar project information available in Project Lists in Appendix B.

APPENDIX F: ADOPTING RESOLUTION

RESOLUTION NO. 13-14

Adopted by the Santa Cruz County Regional Transportation Commission
on the date of December 5, 2013
on the motion of Commissioner **Coonerty**
duly seconded by Commissioner **Robinson**

A RESOLUTION ADOPTING THE
2014 REGIONAL TRANSPORTATION IMPROVEMENT PROGRAM
FOR SANTA CRUZ COUNTY TO
PROGRAM STATE TRANSPORTATION IMPROVEMENT PROGRAM (STIP),
REGIONAL SURFACE TRANSPORTATION PROGRAM (RSTP) FUNDS, AND
MONTEREY BAY SANCTUARY SCENIC TRAIL NETWORK (MBSST) FUNDS AND
AMEND PROJECT LISTINGS FOR PREVIOUSLY PROGRAMMED PROJECTS

WHEREAS, the Santa Cruz County Regional Transportation Commission (RTC) prepared the *2014 Regional Transportation Improvement Program* consistent with the *2010 Santa Cruz County Regional Transportation Plan* (RTP), state law (including SB 45) and the California Transportation Commission's (CTC) *State Transportation Improvement Program (STIP) Guidelines*, and in consultation and cooperation with local project sponsors and Caltrans District 5;

WHEREAS, the Commission must prepare and adopt a *Regional Transportation Improvement Program (RTIP)* for submittal to the California Transportation Commission in order for projects to be considered for the *2014 State Transportation Improvement Program (STIP)*;

WHEREAS, the 2014 STIP Fund Estimate identifies \$5,893,000 in State Transportation Improvement Program available for programming in Santa Cruz County through FY2018/19;

WHEREAS, Santa Cruz County has an unprogrammed balance of \$3.46 million in federal Regional Surface Transportation Program (RSTP) funds;

WHEREAS, the Regional Transportation Commission (RTC) adopted the Master Plan for the Monterey Bay Sanctuary Scenic Trail Network (MBSST) on November 7, 2013 and \$5.3 million in federal earmarks, federal appropriations, Regional Surface Transportation Program (RSTP) and State Transportation Improvement Program (STIP) funds previously designated for the trail network are available for programming to specific sections of the trail; and

WHEREAS, the Santa Cruz County Regional Transportation Commission is the agency responsible for assuring that the regional shares of STIP and RSTP funds are programmed and expended according to CTC and Caltrans guidelines;

THEREFORE, BE IT RESOLVED BY THE SANTA CRUZ COUNTY REGIONAL TRANSPORTATION COMMISSION:

1. The *2014 Regional Transportation Improvement Program for Santa Cruz County* is hereby adopted to:
 - a. Program Santa Cruz County's regional target of 2014 State Transportation Improvement Program funds, FY14 Regional Surface Transportation Program (RSTP) funds, and funds designated for the Monterey Bay Sanctuary Scenic Trail Network (MBSST), as shown in Exhibits A and B;
 - b. Amend project listings for previously programmed projects to reflect the most current project funding and schedule information, as shown in Exhibit C.
2. The California Transportation Commission is hereby requested to incorporate these projects and amendments into the *2014 State Transportation Improvement Program (STIP)* and the Association of Monterey Bay Area Governments is hereby requested to incorporate these actions into the *Metropolitan Transportation Improvement Program (MTIP)*.
3. STIP funding availability is contingent on approval by the California Transportation Commission (CTC).
4. As projects are designed, projects with bicycle and/or pedestrian components shall undergo review by the RTC's Bicycle Committee and/or Elderly and Disabled Transportation Advisory Committee (E&D TAC) and project sponsors shall incorporate complete streets components where feasible and/or appropriate.
5. Any projects approved for funds designated for the MBSST shall be designed and implemented in a manner consistent with the Master Plan, Program Environmental Impact Report (EIR), and Mitigation Monitoring and Reporting Program (MMRP) to the extent possible. This includes incorporation of design standards, bicycle committee review of design, accommodation for utilities including fiber optics, and establishment of an agreement between RTC and local jurisdictions regarding maintenance roles.

6. Project sponsors are required to obtain RTC concurrence in allocation, extension, amendment or other requests for proposed STIP projects prior to submittal of such requests to Caltrans or the CTC.

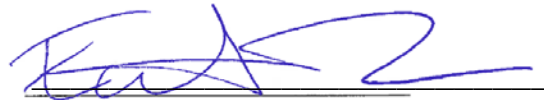
7. Concurrences will be handled administratively by RTC staff unless substantive project issues require that concurrence be authorized by RTC action.

AYES: COMMISSIONERS **Norton, Lane, Johnson, Montesino, Caput, Coonerty, Friend, Reid, McPherson, Graves, and Robinson**

NOES: COMMISSIONERS **Bustichi**

ABSTAIN: COMMISSIONERS

ABSENT: COMMISSIONERS



Eduardo Montesino, Chair

ATTEST:



George Dondero, Secretary

Exhibit A: STIP/RSTP Project List

Exhibit B: MBSST Project List

Exhibit C: Amendments to Previously Approved Projects

Distribution: AMBAG, CTC, Caltrans, Project Sponsors, RTIP files